

| PRODUCT MASS | | | | |
|-----------------|-----|----|-----|----|
| INSTALLED MASS: | 75 | KG | 165 | LB |
| SHIPPING MASS: | 115 | KG | 254 | LB |

SHIPPING MASS FOR ONE COMPLETE UNIT PACKAGED ON A PALLET

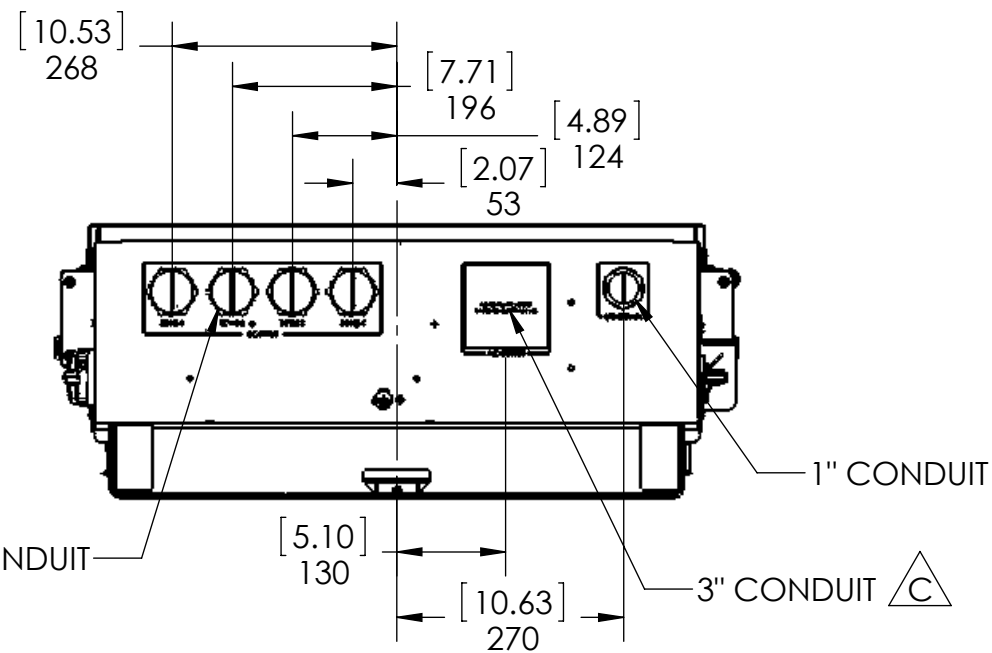
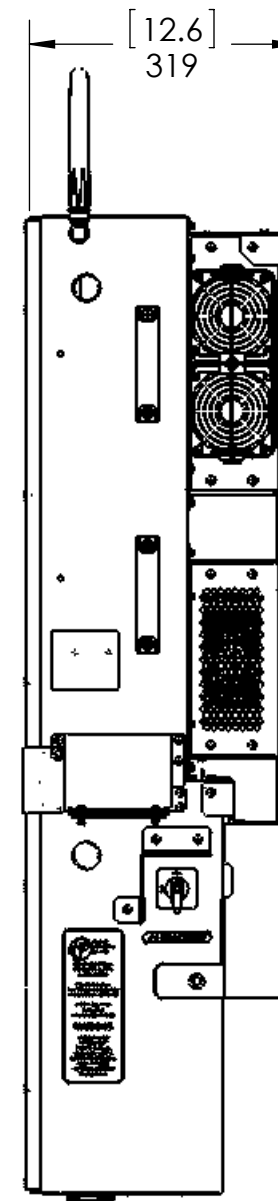
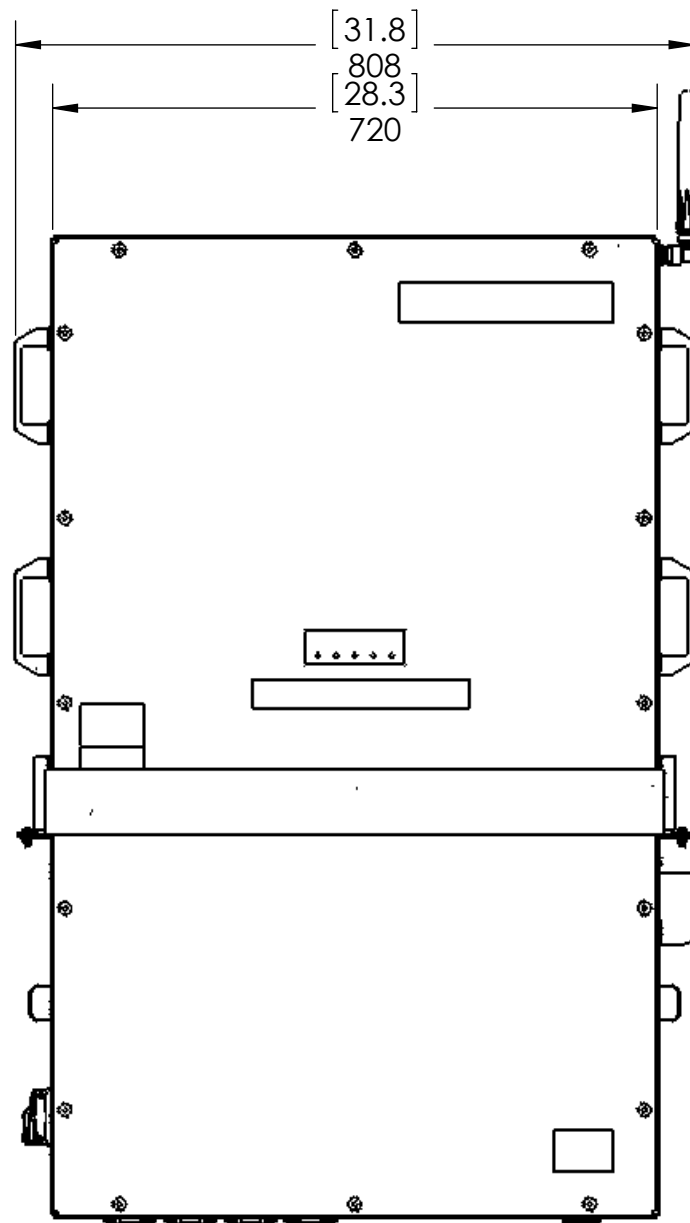
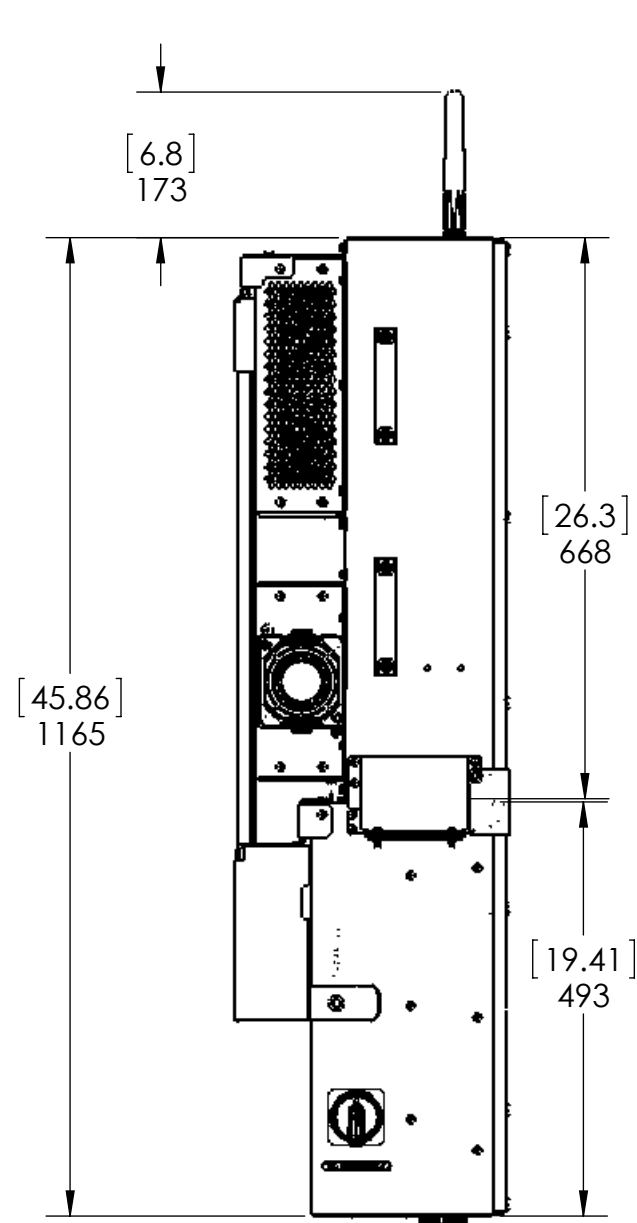
| INDIVIDUAL COMPONENTS | | | |
|-----------------------|------------------|------|-----|
| | DIMS (L x W x H) | KG | LB |
| INVERTER PACKAGING | 34 x 35 x 14.5 | 64.4 | 142 |
| WIRING BOX PACKAGING | 34 x 35 x 13 | 41.7 | 92 |
| PALLET | 35 x 35 x 5 | 9.5 | 21 |

| REVISIONS | | | | |
|-----------|------|---|--------------|-----------|
| REV | EC# | DESCRIPTION | DRAWN | DATE |
| A | 1724 | • INITIAL RELEASE | J. SAVERY | 3/19/2018 |
| B | - | • ADDED MISSING WEIGHTS, DIMENSIONS AND CONDUIT SIZES | C. ROYER | 9/5/2019 |
| C | - | • CHANGED CONDUIT SIZE FOR AC OUTPUT TO 3 INCH TRADE SIZE | A. MARINELLA | 9/2/2020 |



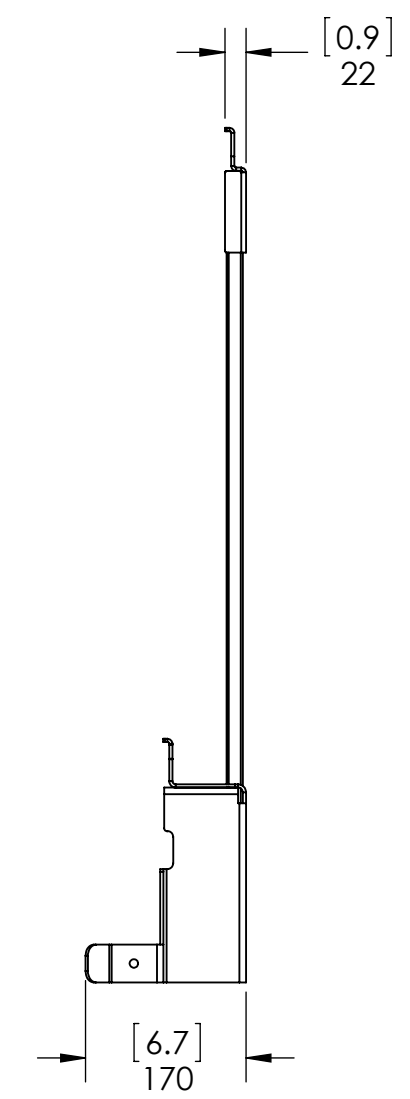
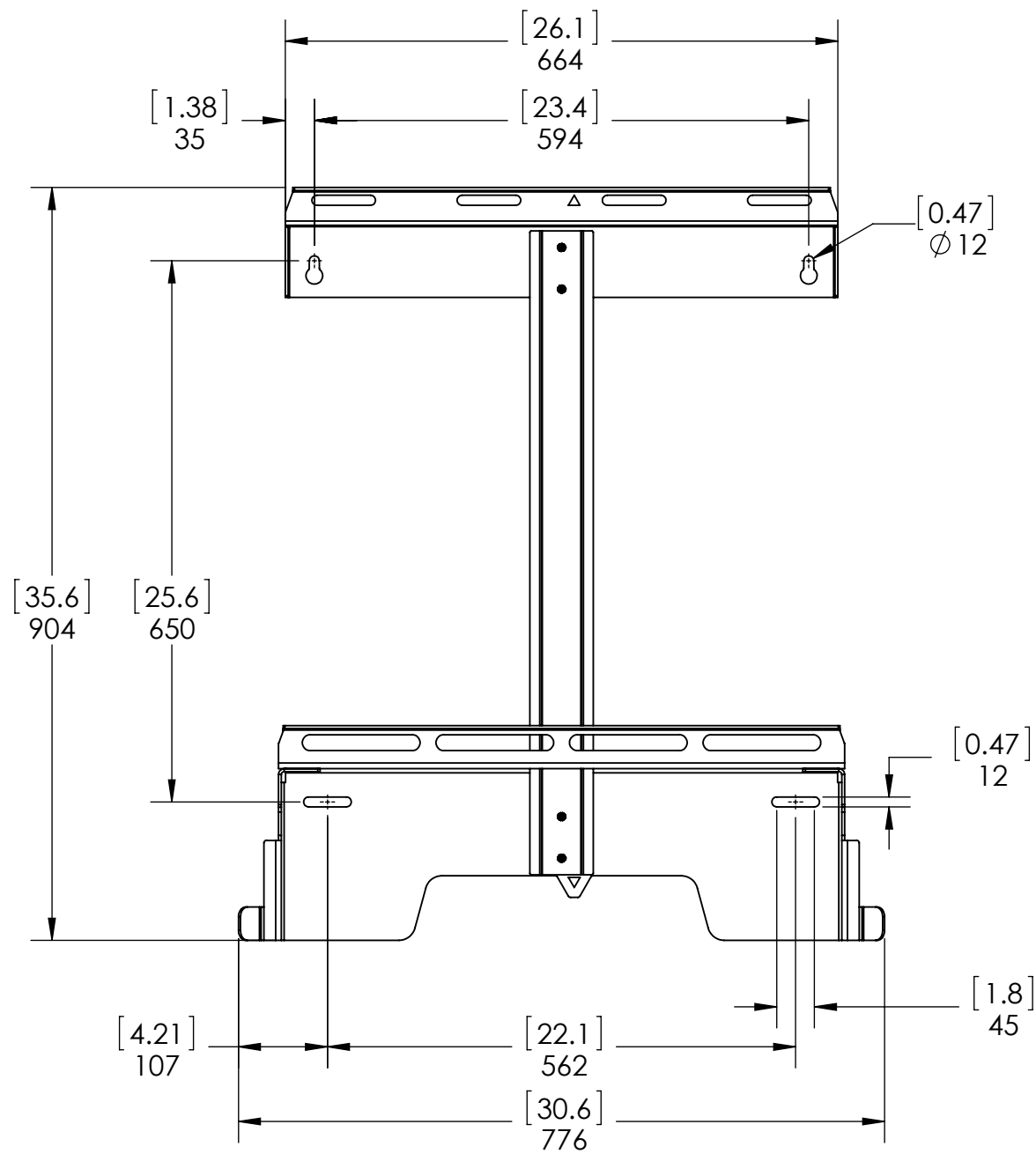
| | | |
|---|---------------------------------------|--------------|
| YASKAWA | | |
| SOLECTRIA SOLAR | | |
| PRODUCT: | XGI1000 | |
| VIEW: | FRONT ISOMETRIC | |
| DOCUMENT: | DOCR-070640 | REV: B |
| SIZE: | B ALL DIMENSIONS ARE IN INCHES | DO NOT SCALE |
| CUSTOMER INTERFACE DRAWING | | |
| PLEASE NOTE: ALL INFORMATION CONTAINED WITHIN THIS DOCUMENT IS SUBJECT TO CHANGE WITHOUT NOTICE | | |
| SCALE: | 1:6 | SHEET 1 OF 4 |

UNITS
[INCHES]
MM



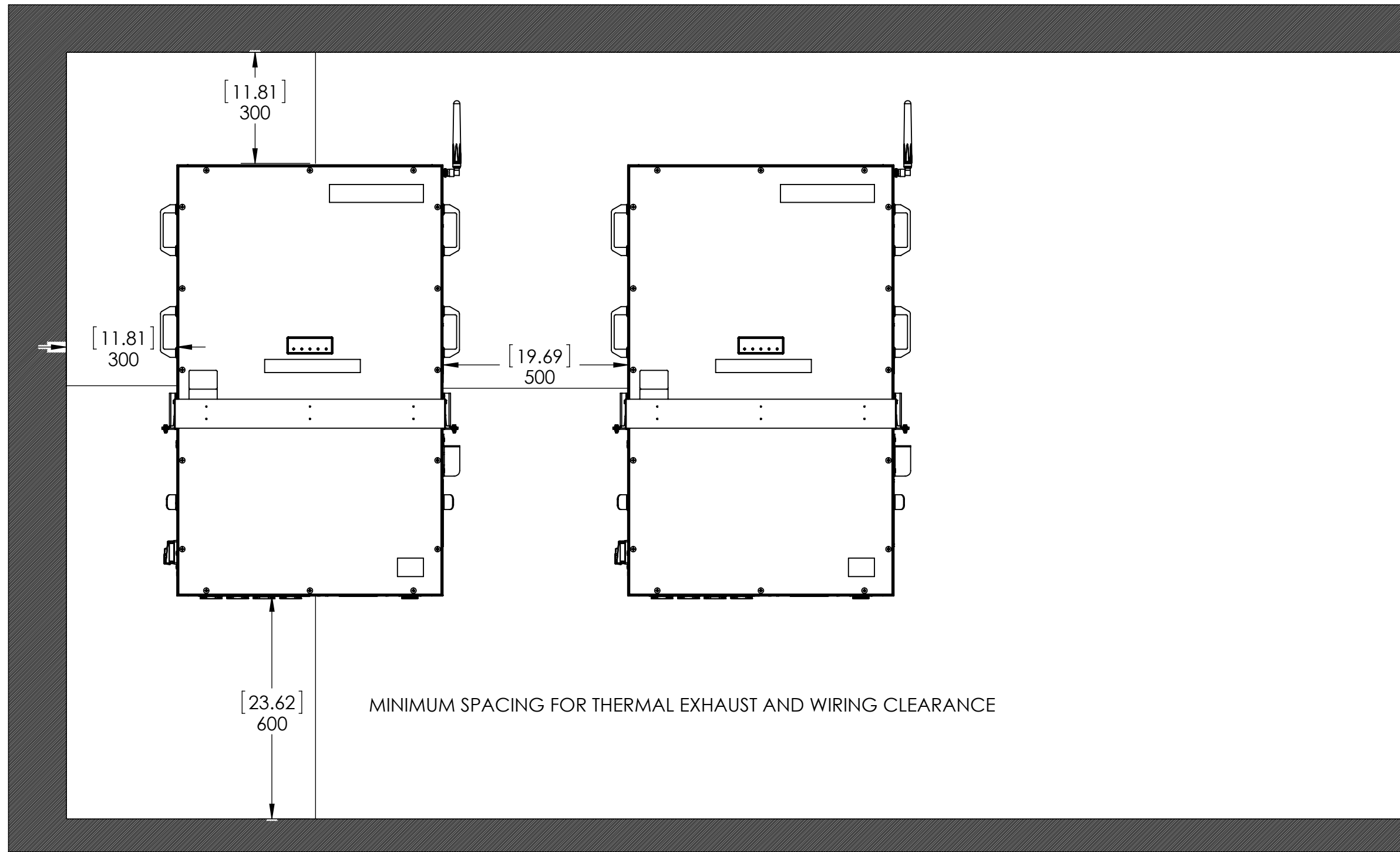
| | | |
|---|----------------|---|
| YASKAWA | | |
| SOLECTRIA SOLAR | | |
| PRODUCT: | XGI1000 | |
| VIEW: | OVERVIEW | |
| DOCUMENT: | DOCR-070640 | REV: B |
| SIZE: | B | ALL DIMENSIONS ARE IN INCHES DO NOT SCALE |
| CUSTOMER INTERFACE DRAWING | | |
| PLEASE NOTE: ALL INFORMATION CONTAINED WITHIN THIS DOCUMENT IS SUBJECT TO CHANGE WITHOUT NOTICE | | |
| SCALE: | 1:9 | SHEET 2 OF 4 |

UNITS
[INCHES]
MM



| | | |
|---|------------------------------|--------------|
| YASKAWA | | |
| SOLECTRIA SOLAR | | |
| PRODUCT: XG11000 | | |
| VIEW: MOUNTING BRACKET DIMENSIONS | | |
| DOCUMENT: DOCR-070640 | REV: B | |
| SIZE: B | ALL DIMENSIONS ARE IN INCHES | DO NOT SCALE |
| CUSTOMER INTERFACE DRAWING | | |
| PLEASE NOTE: ALL INFORMATION CONTAINED WITHIN THIS DOCUMENT IS SUBJECT TO CHANGE WITHOUT NOTICE | | |
| SCALE: 1:8 | SHEET 3 OF 4 | |

UNITS
[INCHES]
MM



YASKAWA
SOLECTRIA SOLAR

PRODUCT: **XG1000**

VIEW: **INSTALLATION SPACE REQUIREMENTS**

DOCUMENT: **DOCR-070640** REV: **B**

SIZE: **B** ALL DIMENSIONS ARE IN INCHES DO NOT SCALE

CUSTOMER INTERFACE DRAWING

PLEASE NOTE: ALL INFORMATION CONTAINED WITHIN THIS DOCUMENT IS SUBJECT TO CHANGE WITHOUT NOTICE

SCALE: 1:12 SHEET 4 OF 4

UNITS
[INCHES]
MM