



# SOLREVIEW WEATHER STATION

## FEATURES

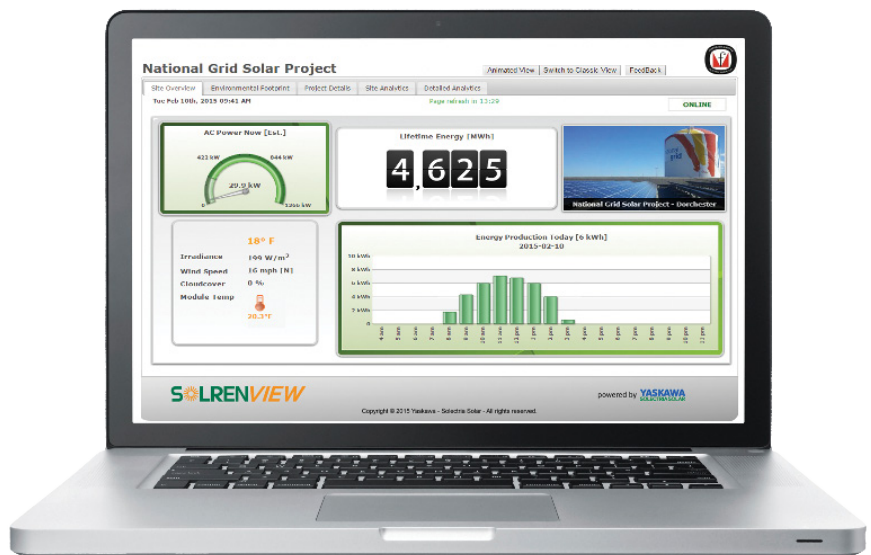
- Solar irradiance sensor
- Ambient temperature sensor
- Module temperature sensor
- Accurate readings
- Detailed system data
- Type 4X enclosure
- RS-485 Modbus RTU for external communication interface

## OPTIONS

- Wind speed sensor
- Wind direction sensor

## WEATHER MONITORING

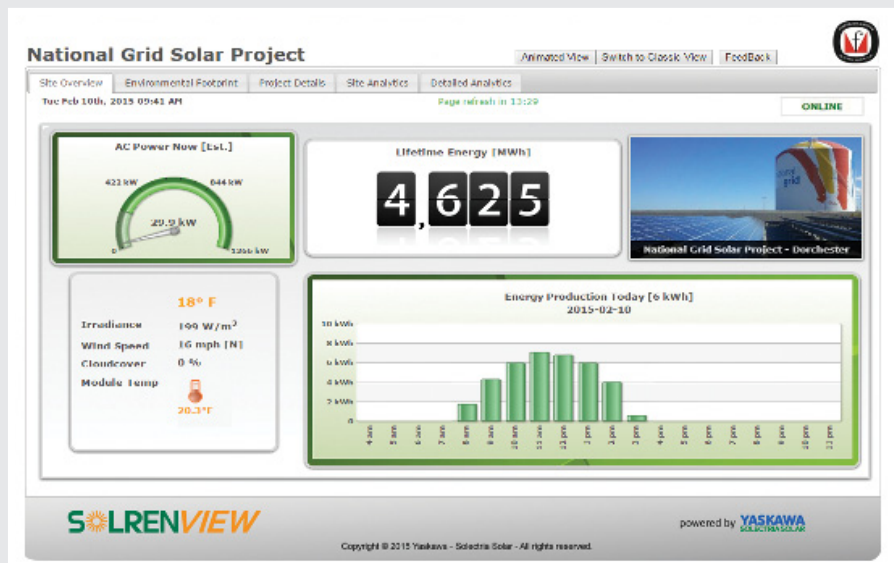
The real-time weather station allows customers to view accurate readings for crucial environmental information. The weather station contains a solar irradiance sensor and temperature sensors for ambient and module measurements. Wind speed and direction sensors are options that may be added to the weather station. The weather station is a great educational tool and is compatible with many third-party monitoring systems. The SolrenView™ Weather Station is compliant with the RS-485 SunSpec Environmental Sensor System.



SPECIFICATIONS	
<b>Weather Station Enclosure</b>	
Ambient Temperature Range	-40°F to +131°F (-40°C to +55°C)
Dimensions (H x W x D)	12 in. x 10 in. x 4 in. (304.8 mm x 254 mm x 101.6 mm)
Enclosure Rating	NEMA 4X
<b>Solar Irradiance Temperature Sensor</b>	
Repeatability	±1%
Cosine Response	45° zenith angle: ±1%; 75° zenith angle: ±5%
Sensor Wire Length	197 in. (5004 mm)
Ambient Temperature Range	-13°F to +131°F (-25°C to +55°C)
<b>Ambient Temperature Sensor</b>	
Range	-40°F to +257°F (-40°C to +125°C)
Accuracy	±1°C (±33.8°F)
Sensor Wire Length	120 in. (3048 mm)
<b>Module Temperature Sensor</b>	
Range	-40°F to +257°F (-40°C to +125°C)
Accuracy	±1°C (±4°F)
Mounting Location	back of module
Sensor Wire Length	120 in. (3048 mm)
<b>Wind Speed Sensor</b>	
Accuracy	±2.5 mph
Speed Range	2.5 mph to 125+ mph (5 km/h to 200+ km/h)
Sensor Wire Length	300 in. (7620 mm)
<b>Wind Direction Sensor</b>	
Sensor Range	360°, zero deadband
Sensor Wire Length	300 in. (7620 mm)
Please see the SolrenView datasheet for more information and specifications about web-based monitoring: <a href="http://www.solectria.com/support/documentation">www.solectria.com/support/documentation</a>	



Yaskawa - Solectria Solar's weather station can withstand the harshest weather conditions.



SolrenView outputs and displays weather station information including outside temperature, irradiance, wind speed, wind direction, cloud cover, and module temperature.