

PRODUCT MASS			
	SGI 500XTM	SGI 750XTM	
INSTALLED MASS:	2870	3360	LBS
SHIPPING MASS:	3080	3570	LBS

SYSTEM MASS IS ESTIMATED ONLY, AND IS FOR THE BASE UNIT WITHOUT OPTIONS.

NOTES:

1. SEE SOLECTRIA RENEWABLES DOCR-070506 (INSTALLATION AND OPERATION MANUAL, SGI 500XTM-750XTM) FOR COMPLETE INSTALLATION REQUIREMENTS.
2. ALL WIRE SIZING INFORMATION GIVEN IN THIS DRAWING IS FOR REFERENCE PURPOSES ONLY, SEE SOLECTRIA RENEWABLES DOCR-070506 (INSTALLATION AND OPERATION MANUAL, SGI 500XTM-750XTM) FOR DETAILED WIRE SIZING INFORMATION.
3. CUSTOMER INTERFACE DRAWING SHEETS INCLUDE:

1. FRONT ISOMETRIC

2. FRONT

3. REAR

4. RIGHT

5. LEFT

6. TOP

7. BOTTOM

8. DC CONDUCTOR CONNECTIONS

9. DC CONDUCTOR CONNECTIONS

10. DC GROUND CONNECTIONS

11. AC CONDUCTOR CONNECTIONS

12. AC CONDUCTOR CONNECTIONS WITH OPTIONAL AC BREAKER OR DISCONNECT

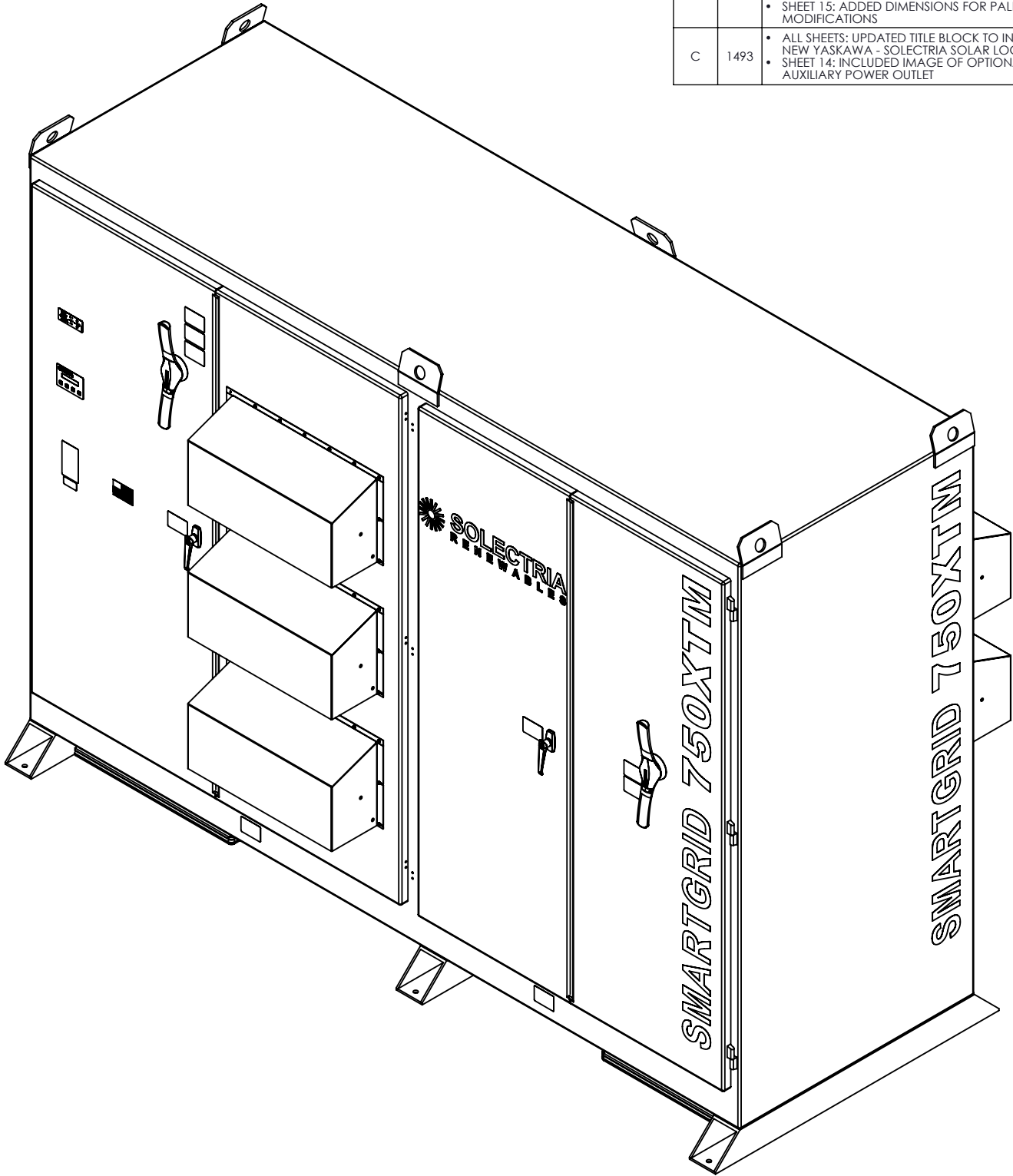
13. AC GROUND CONNECTIONS

14. SIGNAL WIRE ROUTING LOCATIONS

15. AS SHIPPED ISOMETRIC

16. RECOMMENDED RIGGING AND LIFTING METHODS

REVISIONS					
REV	EC #	DESCRIPTION	DRAWN	CHECKED	DATE
A	1245	<div><div>• INITIAL RELEASE = REV A2 PLUS THE FOLLOWING CHANGES:</div><div>• SHEET 1: ADDED NOTE 2 ABOUT WIRE SIZING.</div><div>• SHEET 1: ADDED SGI 500XTM MASS TO THE PRODUCT MASS TABLE.</div><div>• SHEET 3: ADDED DC CONDUIT ENTRY LOCATIONS ON REAR WALL.</div><div>• ALL SHEETS: UPDATED DRAWING TEMPLATE.</div></div>	J. KADOKO	M. KELLY	8/12/2014
B	1395	<div><div>• ALL SHEETS: AIR INTAKE/EXHAUST DESIGN CHANGED, IMAGES UPDATED</div><div>• SHEET 5: UPDATED/ADDED DIMENSIONS FOR NEW AIR INTAKE/EXHAUST DESIGN</div><div>• SHEET 15: PALLET DESIGN CHANGED, IMAGE UPDATED</div><div>• SHEET 15: ADDED DIMENSIONS FOR PALLET MODIFICATIONS</div></div>	C. THOMPSEN	J. FILLION	2/23/2015
C	1493	<div><div>• ALL SHEETS: UPDATED TITLE BLOCK TO INCLUDE NEW YASKAWA - SOLECTRIA SOLAR LOGO</div><div>• SHEET 14: INCLUDED IMAGE OF OPTIONAL AUXILIARY POWER OUTLET</div></div>	A. MARINELLA	C. THOMPSEN	9/8/2016



C

YASKAWA

SOLECTRIA SOLAR

PRODUCT:

SGI 500/750XTM

VIEW:

FRONT ISOMETRIC

DOCUMENT:

DOCR-070352

REV:

C

SIZE:

B

ALL DIMENSIONS ARE IN INCHES

DO NOT SCALE

CUSTOMER INTERFACE DRAWING

PLEASE NOTE: ALL INFORMATION CONTAINED WITHIN THIS DOCUMENT IS SUBJECT TO CHANGE WITHOUT NOTICE

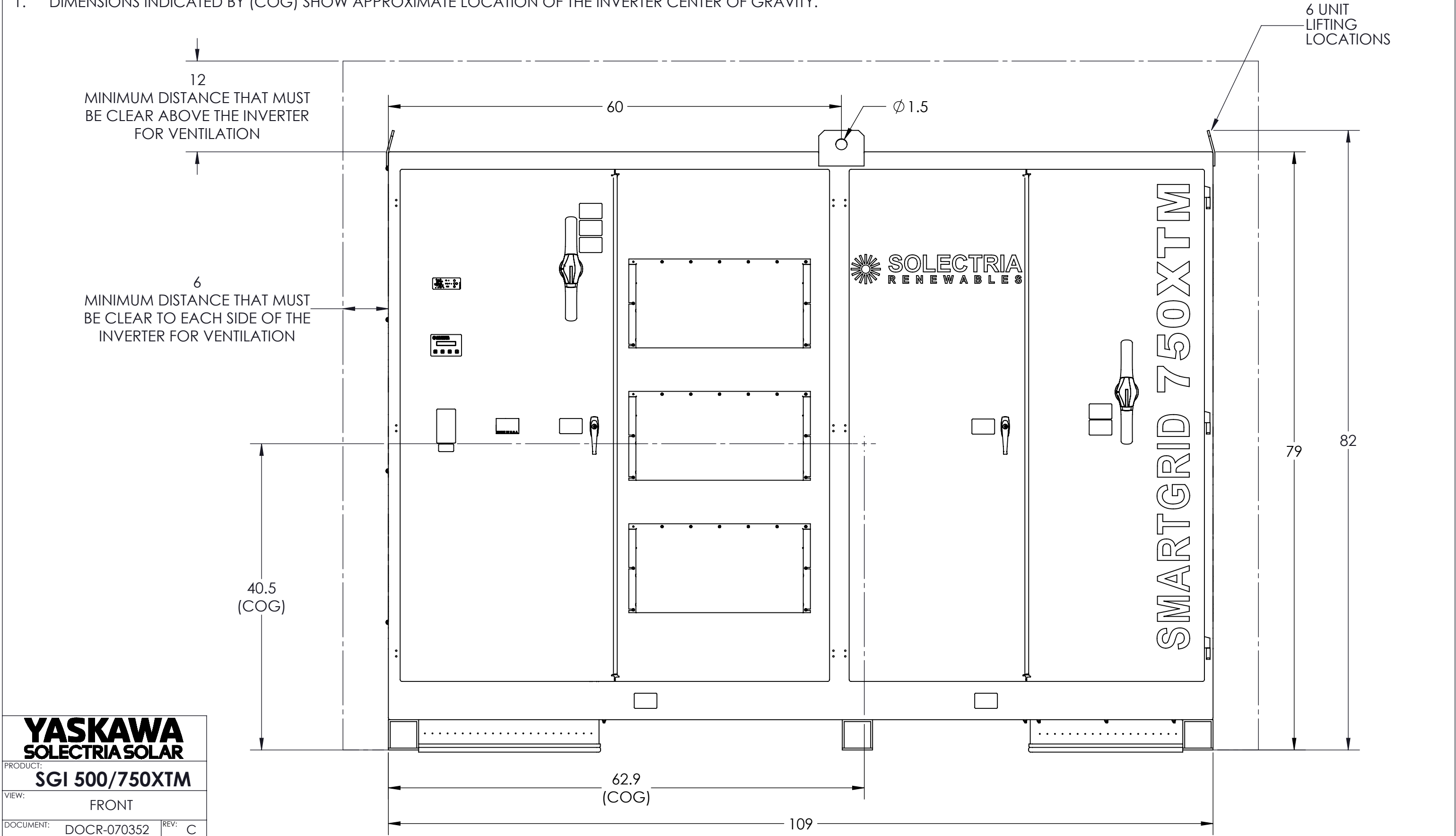
SCALE:

1:16

SHEET

1 OF 16

NOTES:
1. DIMENSIONS INDICATED BY (COG) SHOW APPROXIMATE LOCATION OF THE INVERTER CENTER OF GRAVITY.



YASKAWA		
SOLECTRIA SOLAR		
PRODUCT: SGI 500/750XTM		
VIEW: FRONT		
DOCUMENT: DOCR-070352		REV: C
SIZE: B	ALL DIMENSIONS ARE IN INCHES	DO NOT SCALE
CUSTOMER INTERFACE DRAWING		
PLEASE NOTE: ALL INFORMATION CONTAINED WITHIN THIS DOCUMENT IS SUBJECT TO CHANGE WITHOUT NOTICE		
SCALE: 1:12	SHEET 2 OF 16	

1. THE ALTERNATE DC CONDUIT ENTRY LOCATIONS ARE TO BE USED ONLY IF THE FOLLOWING INTEGRAL SUBCOMBINER OPTIONS ARE SELECTED:

- ## 2. 6 OR LESS BREAKER INPUTS



—ALTERNATE DC
CONDUIT ENTRY
LOCATIONS

28

36

- 49

21.0

22.0

30.4

4.7

- 140 -

— 21.5 —

PRODUCT:
SGI 500/750XTM

PRODUCT:
SGI 500/750XTM

VIEW: REAR

DOCUMENT: DOCR-070352	REV: C
-----------------------	--------

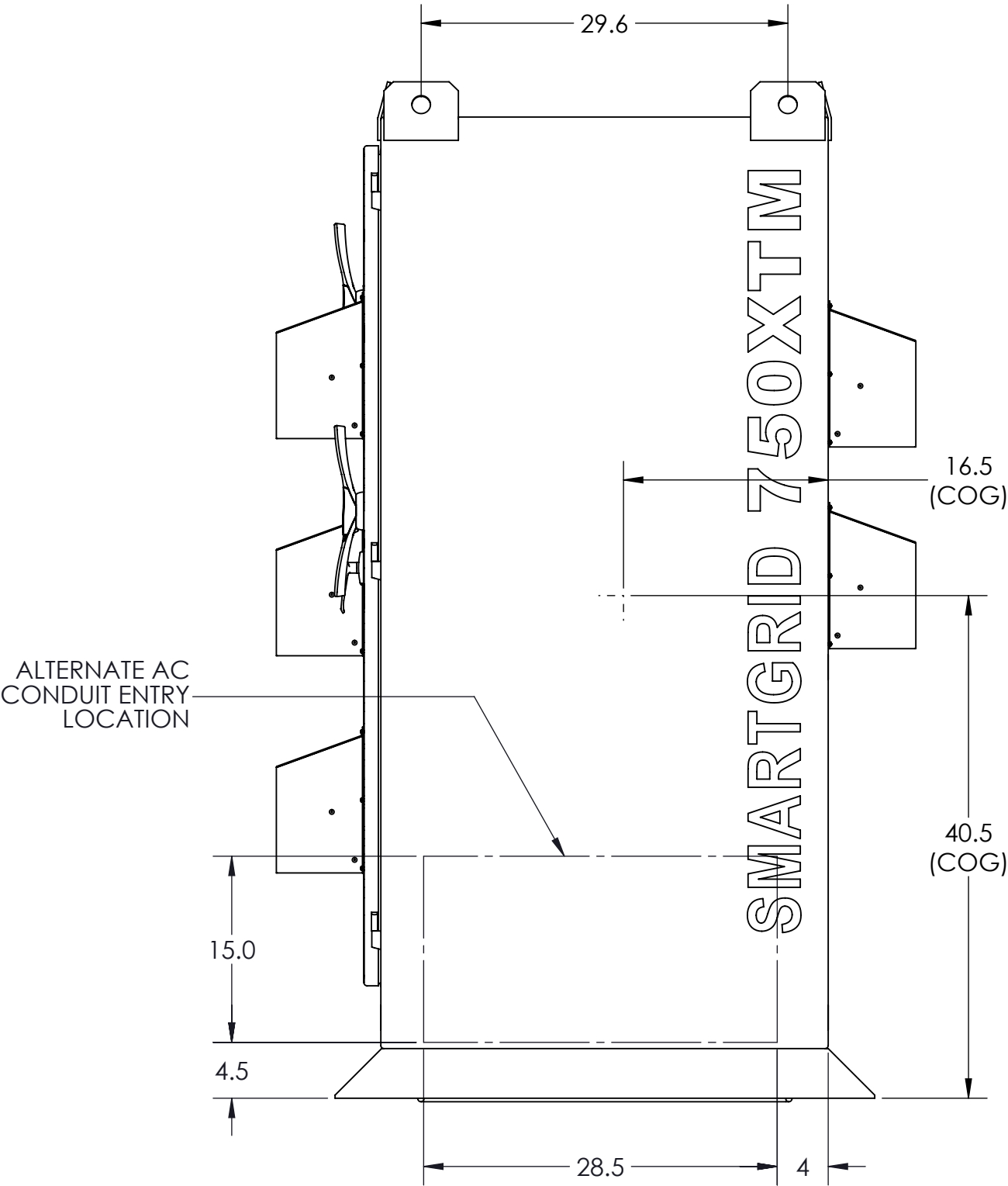
SIZE: B	ALL DIMENSIONS ARE IN INCHES	DO NOT SCALE
----------------	---------------------------------	--------------

CUSTOMER INTERFACE DRAWING

PLEASE NOTE: ALL INFORMATION CONTAINED WITHIN THIS DOCUMENT IS SUBJECT TO CHANGE WITHOUT NOTICE

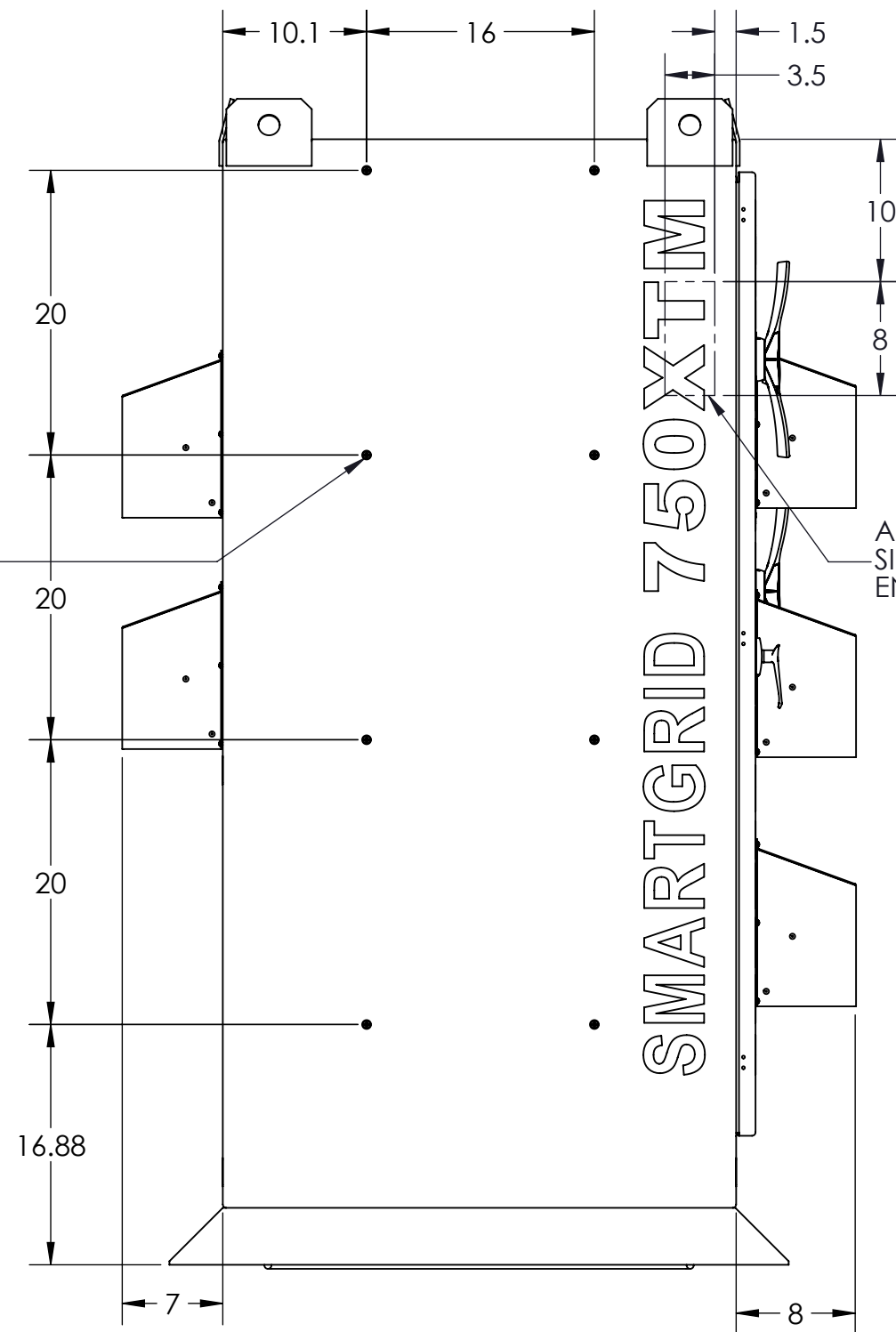
ISO 04-04-26 REV. B

- NOTES:**
- 1. DIMENSIONS INDICATED BY (COG) SHOW APPROXIMATE LOCATION OF THE INVERTER CENTER OF GRAVITY.



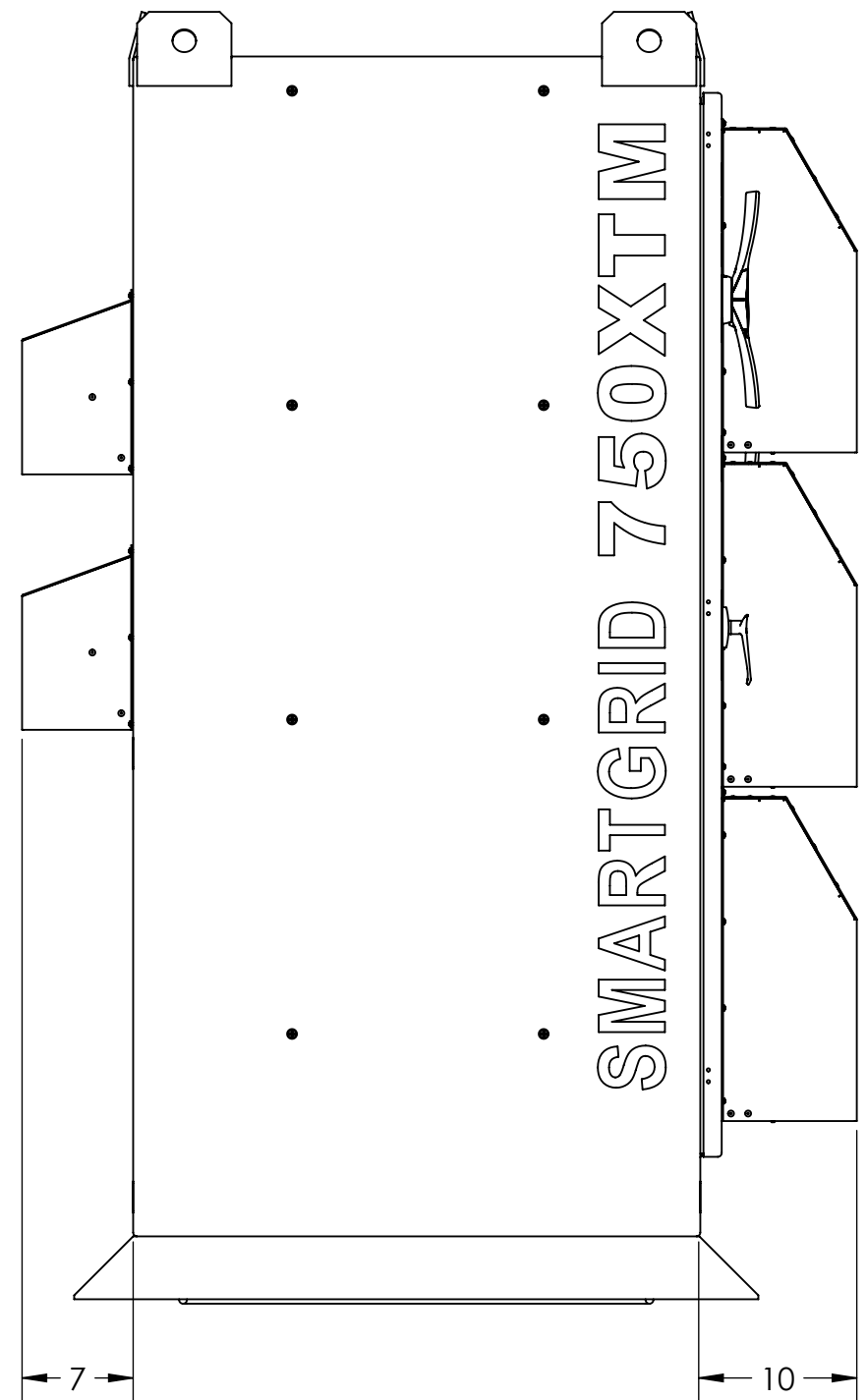
YASKAWA		
SOLECTRIA SOLAR		
PRODUCT: SGI 500/750XTM		
VIEW: RIGHT		
DOCUMENT: DOCR-070352		REV: C
SIZE: B	ALL DIMENSIONS ARE IN INCHES	DO NOT SCALE
CUSTOMER INTERFACE DRAWING		
PLEASE NOTE: ALL INFORMATION CONTAINED WITHIN THIS DOCUMENT IS SUBJECT TO CHANGE WITHOUT NOTICE		
SCALE: 1:12	SHEET 4 OF 16	

8 MOUNTING LOCATIONS
FOR EXTERNAL ACCESSORIES
THREAD SIZE: 1/4-20
THREAD DEPTH: .310



ALTERNATE
SIGNAL WIRE
ENTRY LOCATION

WITHOUT AIR FILTER OPTION



WITH AIR FILTER OPTION

YASKAWA
SOLECTRIA SOLAR

PRODUCT:
SGI 500/750XTM

VIEW:
LEFT

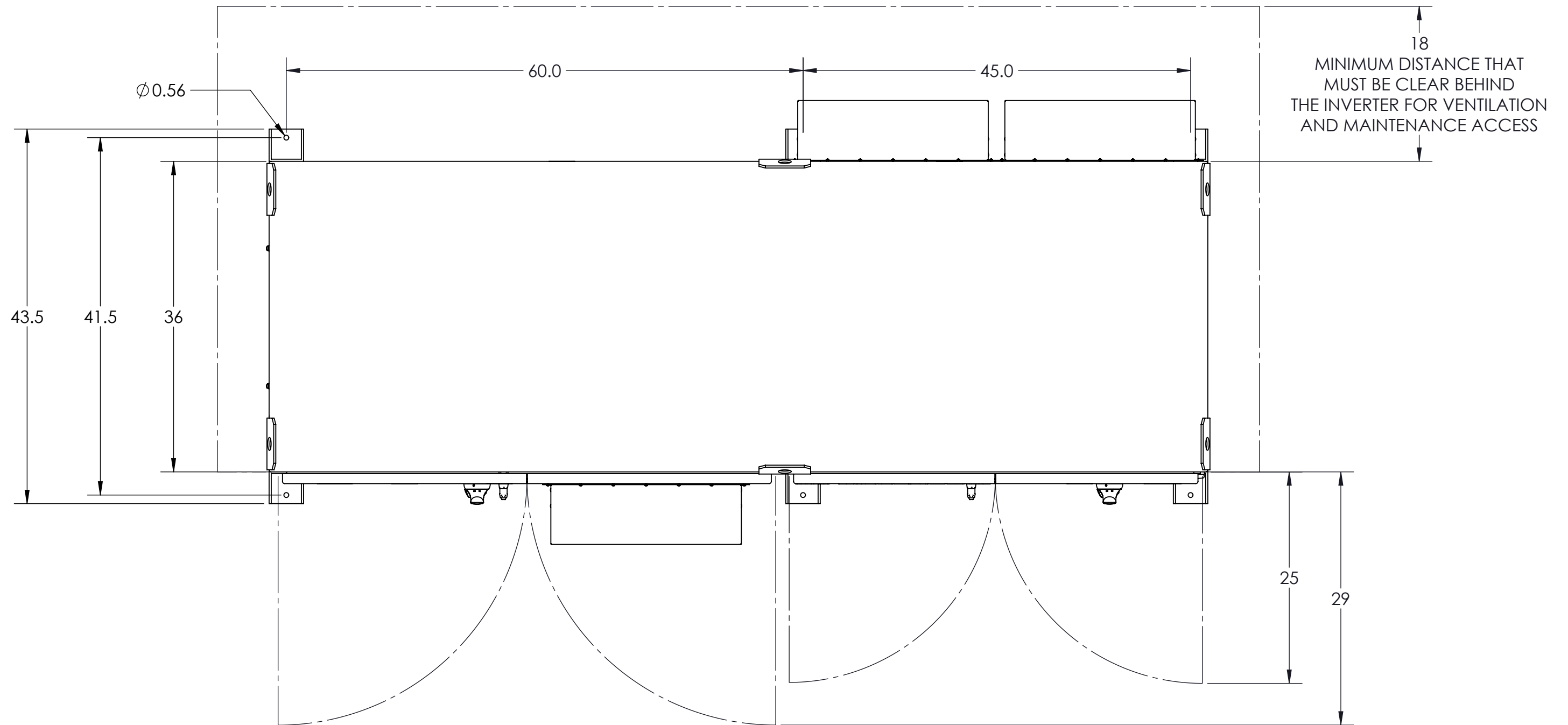
DOCUMENT: DOCR-070352 REV: C

SIZE: **B** ALL DIMENSIONS ARE IN INCHES DO NOT SCALE

CUSTOMER INTERFACE DRAWING

PLEASE NOTE: ALL INFORMATION CONTAINED WITHIN THIS DOCUMENT IS SUBJECT TO CHANGE WITHOUT NOTICE

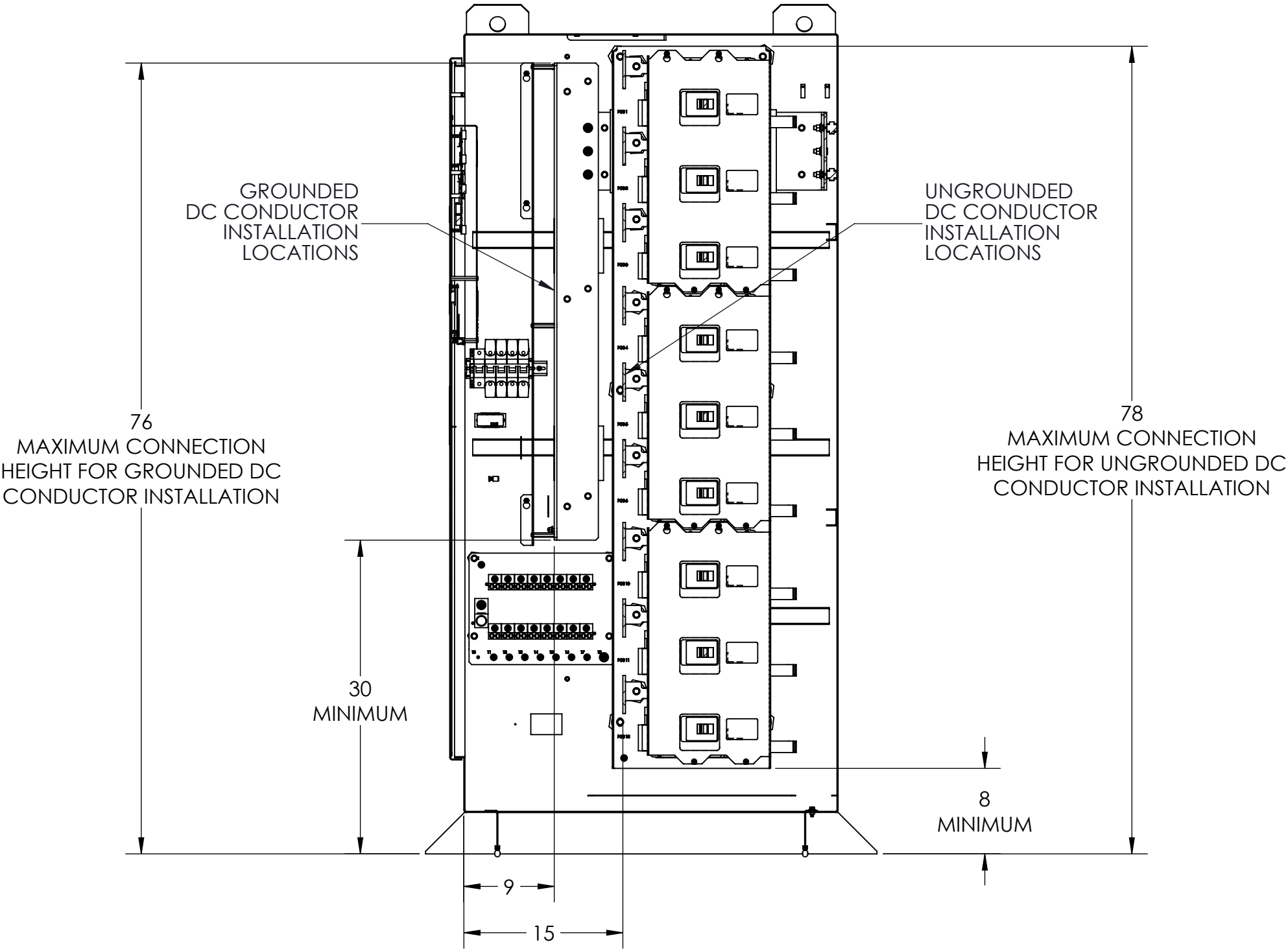
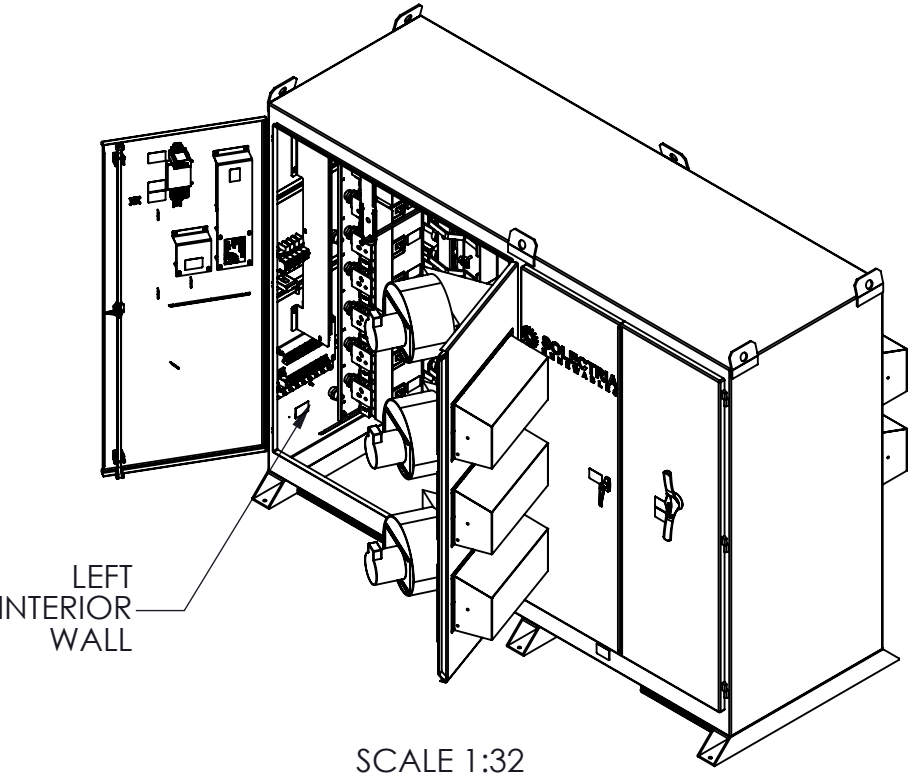
SCALE: 1:12 SHEET 5 OF 16



YASKAWA		
SOLECTRIA SOLAR		
PRODUCT: SGI 500/750XTM		
VIEW: TOP		
DOCUMENT: DOCR-070352		REV: C
SIZE: B	ALL DIMENSIONS ARE IN INCHES	DO NOT SCALE
CUSTOMER INTERFACE DRAWING		
PLEASE NOTE: ALL INFORMATION CONTAINED WITHIN THIS DOCUMENT IS SUBJECT TO CHANGE WITHOUT NOTICE		
SCALE: 1:12	SHEET 6 OF 16	

NOTES:
1. DC CONDUCTOR CONNECTIONS ARE DEPENDENT ON SELECTED INTEGRAL SUBCOMBINER. SEE SOLECTRIA RENEWABLES DOCR-070506 (INSTALLATION AND OPERATION MANUAL, SGI 500XTM-750XTM) FOR COMPLETE REQUIREMENTS.

DC INPUT CONDUCTOR SIZE	
# OF CONDUCTORS PER INPUT	CONDUCTOR SIZE
1	1000 MCM MAX.
2	600 MCM MAX.



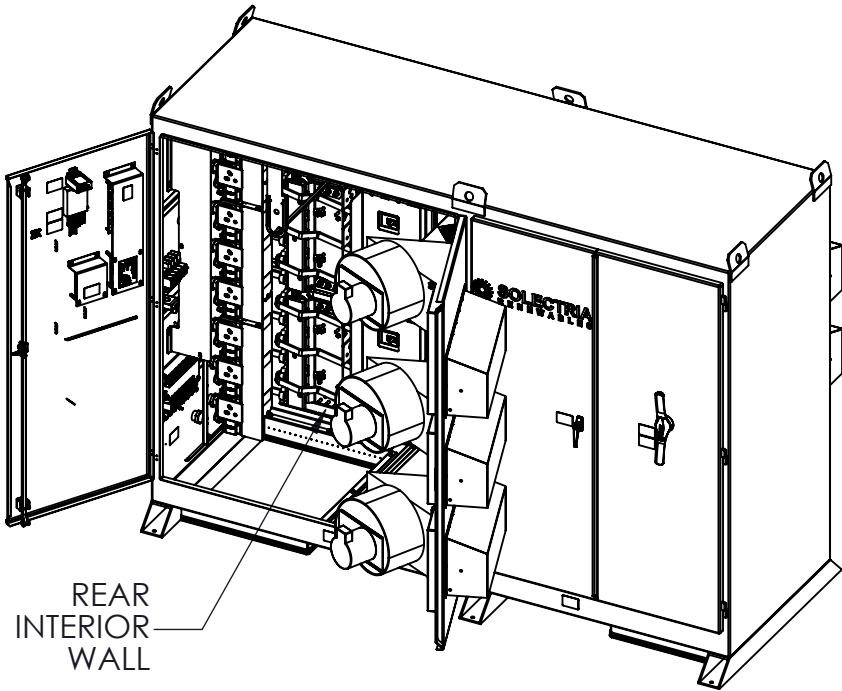
SECTION VIEW : LEFT INTERIOR WALL

YASKAWA		
SOLECTRIA SOLAR		
PRODUCT: SGI 500/750XTM		
VIEW: DC CONDUCTOR CONNECTIONS		
DOCUMENT: DOCR-070352	REV: C	
SIZE: B	ALL DIMENSIONS ARE IN INCHES	DO NOT SCALE
CUSTOMER INTERFACE DRAWING		
PLEASE NOTE: ALL INFORMATION CONTAINED WITHIN THIS DOCUMENT IS SUBJECT TO CHANGE WITHOUT NOTICE		
SCALE: 1:12	SHEET 8 OF 16	

NOTES:

1.
- DC CONDUCTOR CONNECTIONS ARE DEPENDENT ON SELECTED INTEGRAL SUBCOMBINER. REFERENCE SOLECTRIA RENEWABLES DOCR-070506 (INSTALLATION AND OPERATION MANUAL, SGI 500XTM-750XTM) FOR COMPLETE REQUIREMENTS.
2.
- REAR INTERIOR WALL DC CONDUCTOR CONNECTION LOCATIONS APPLY ONLY TO UNGROUNDED CONDUCTORS FOR INTEGRAL DC BREAKER SUBCOMBINER IN EXCESS OF 6 INPUTS. REAR INTERIOR WALL DC CONDUCTOR CONNECTION LOCATIONS DO NOT APPLY TO INTEGRAL FUSE SUBCOMBINER.

DC INPUT CONDUCTOR SIZE	
# OF CONDUCTORS PER INPUT	CONDUCTOR SIZE
1	1000 MCM MAX.
2	600 MCM MAX.

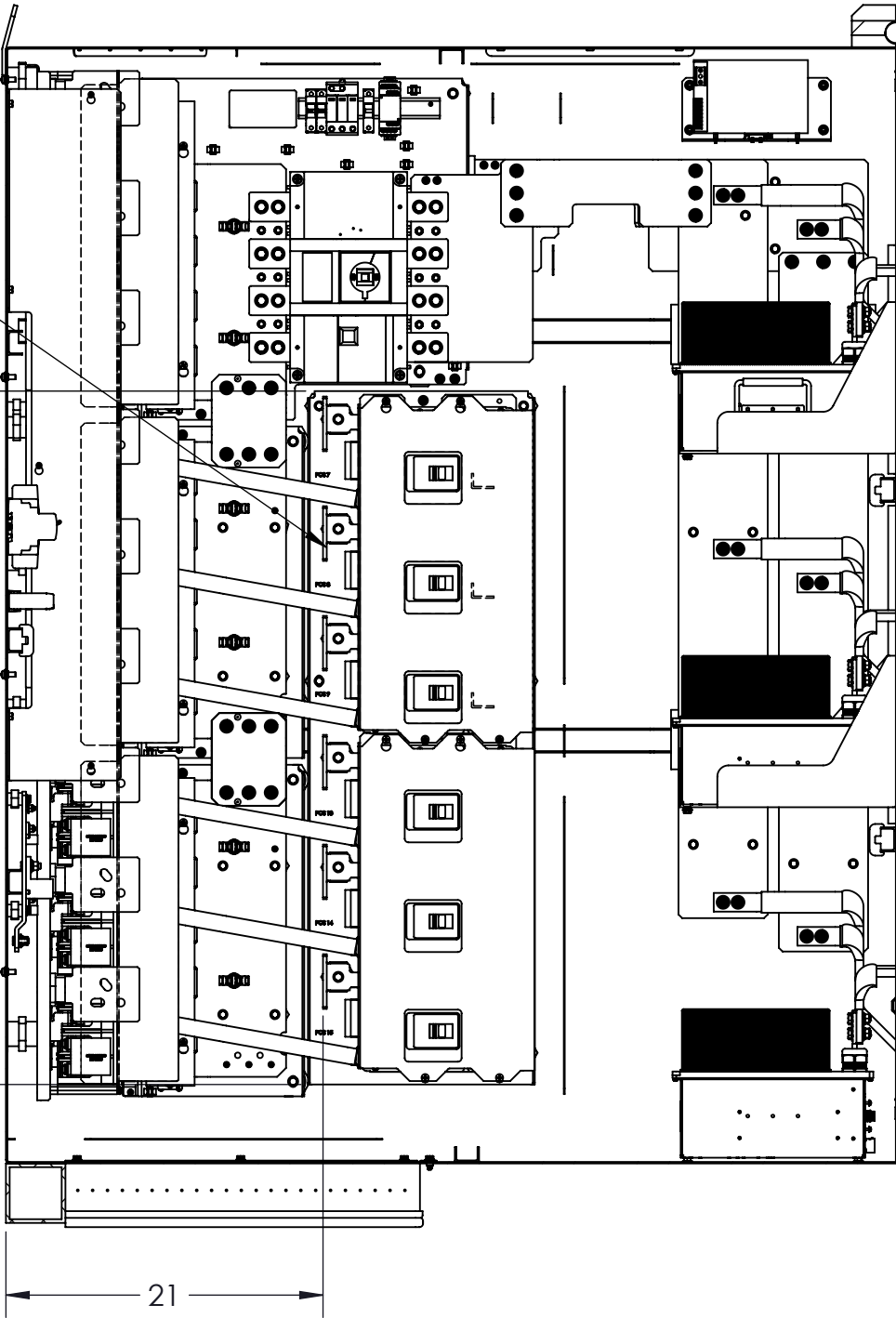


SCALE 1:32

UNGROUNDED
DC CONDUCTOR
INSTALLATION
LOCATIONS

56
MAXIMUM CONNECTION
HEIGHT FOR UNGROUNDED
DC CONDUCTOR INSTALLATION

9
MINIMUM



SECTION VIEW : REAR INTERIOR WALL

YASKAWA
SOLECTRIA SOLAR

PRODUCT:
SGI 500/750XTM

VIEW: DC CONDUCTOR
CONNECTIONS

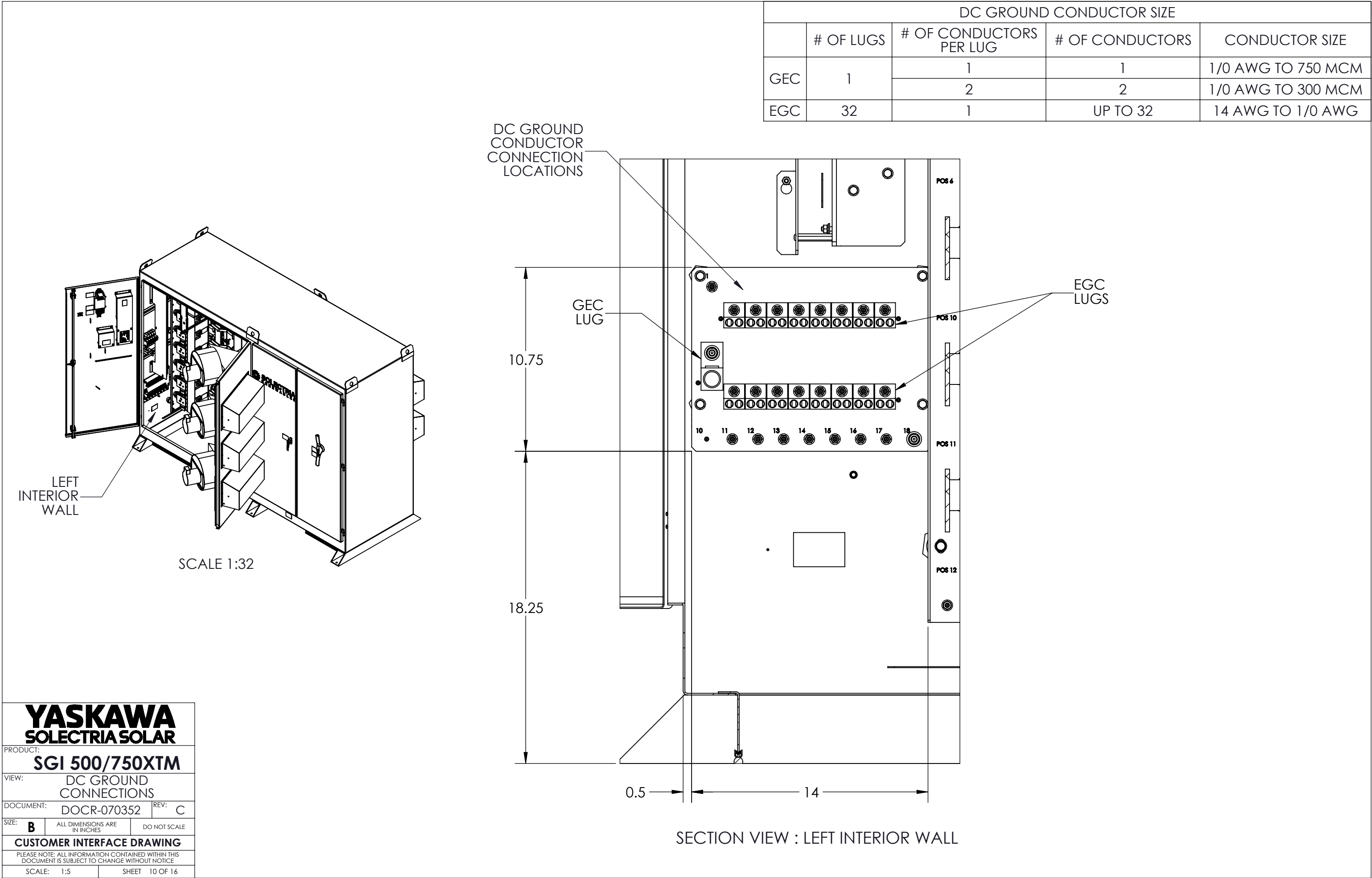
DOCUMENT: DOCR-070352 REV: C

SIZE: **B** ALL DIMENSIONS ARE
IN INCHES DO NOT SCALE

CUSTOMER INTERFACE DRAWING

PLEASE NOTE: ALL INFORMATION CONTAINED WITHIN THIS
DOCUMENT IS SUBJECT TO CHANGE WITHOUT NOTICE

SCALE: 1:12 SHEET 9 OF 16



YASKAWA

SOLECTRIA SOLAR

PRODUCT:

SGI 500/750XTM

VIEW:

DC GROUND CONNECTIONS

DOCUMENT:

DOCR-070352

REV:

C

SIZE:

B

ALL DIMENSIONS ARE IN INCHES

DO NOT SCALE

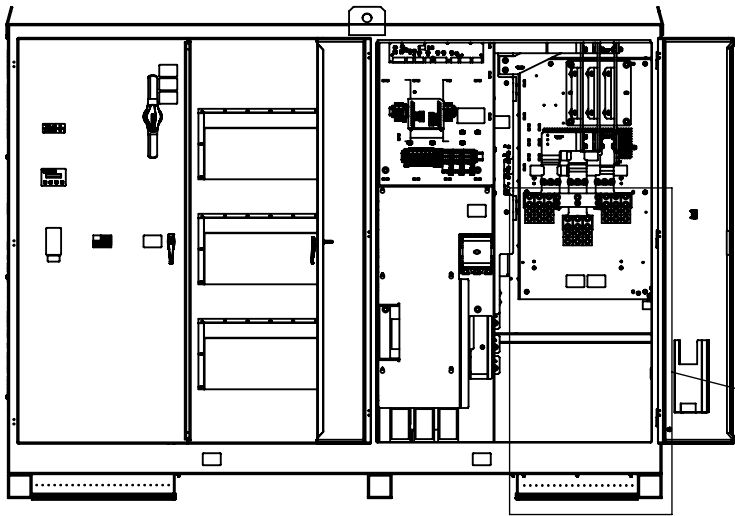
CUSTOMER INTERFACE DRAWING

PLEASE NOTE: ALL INFORMATION CONTAINED WITHIN THIS DOCUMENT IS SUBJECT TO CHANGE WITHOUT NOTICE

SCALE: 1:5

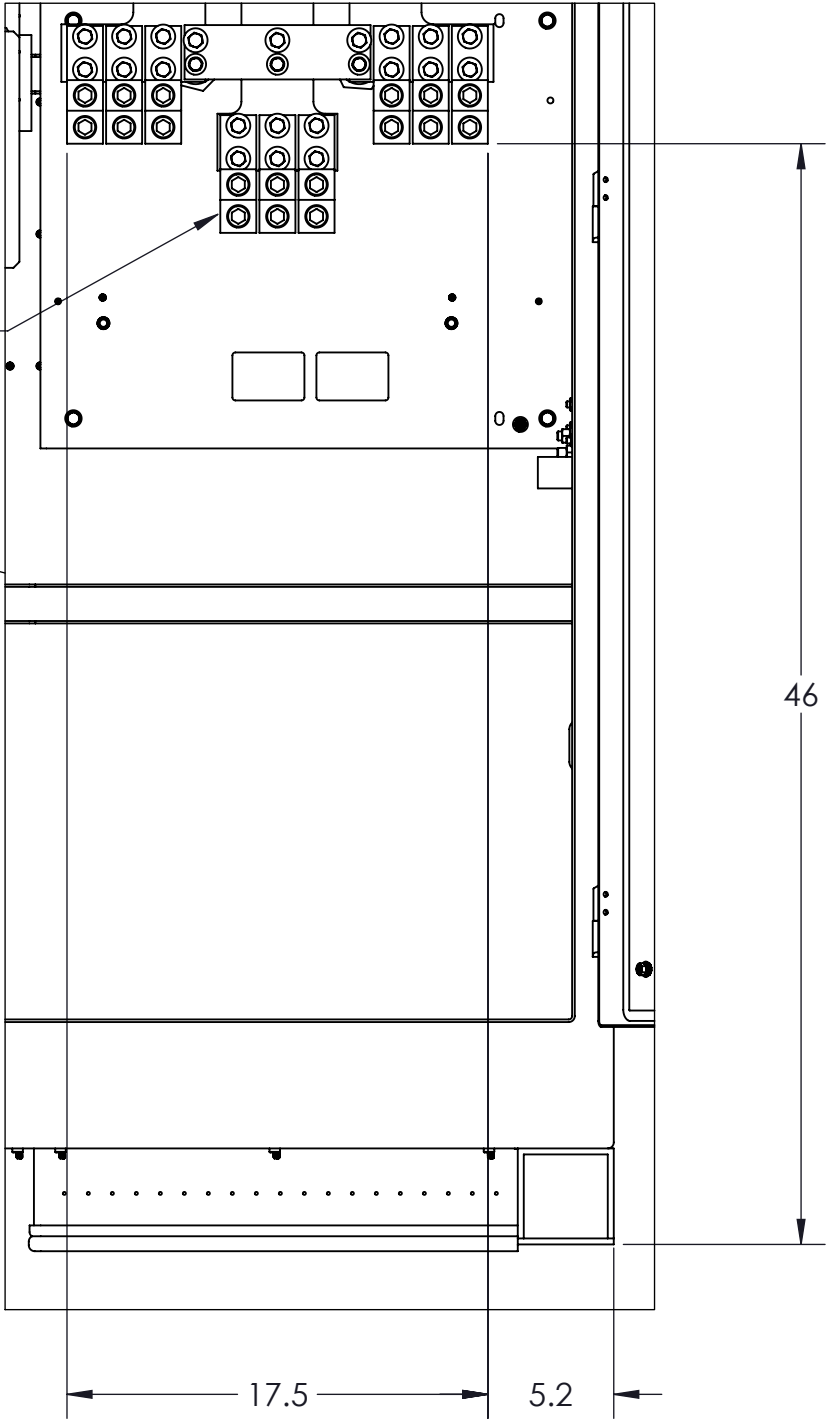
SHEET 10 OF 16

AC OUTPUT CONDUCTOR SIZE			
# OF LUGS PER PHASE	# OF CONDUCTORS PER LUG	# OF CONDUCTORS PER PHASE	CONDUCTOR SIZE
6	1	UP TO 6	300 MCM TO 800 MCM



SCALE 1:32

AC CONDUCTOR
CONNECTION
LOCATIONS



DETAIL : AC CONDUCTOR CONNECTIONS

YASKAWA

SOLECTRIA SOLAR

PRODUCT:

SGI 500/750XTM

VIEW:

AC CONDUCTOR CONNECTIONS

DOCUMENT:

DOCR-070352

REV:

C

SIZE:

B

ALL DIMENSIONS ARE IN INCHES

DO NOT SCALE

CUSTOMER INTERFACE DRAWING

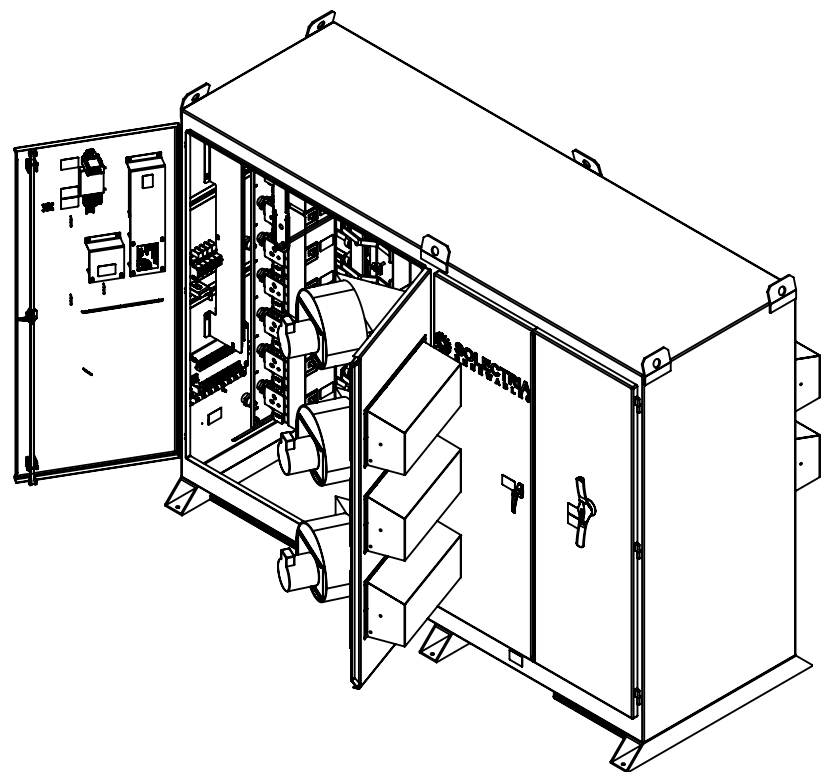
PLEASE NOTE: ALL INFORMATION CONTAINED WITHIN THIS DOCUMENT IS SUBJECT TO CHANGE WITHOUT NOTICE

SCALE:

1:8

SHEET

11 OF 16



SCALE 1:32


GENERAL ROUTING LOCATION
FOR SIGNAL WIRE CONNECTIONS

- REMOTE SHUTDOWN
- OPTIONAL SOLREVIEW AIR
- OPTIONAL SHUNT TRIP
- OPTIONAL RESIDUAL
CURRENT MONITORING

GENERAL ROUTING LOCATION
FOR SIGNAL WIRE CONNECTIONS

- RS 485
- OPTIONAL SOLREVIEW

ALTERNATE SIGNAL WIRE ENTRY LOCATION

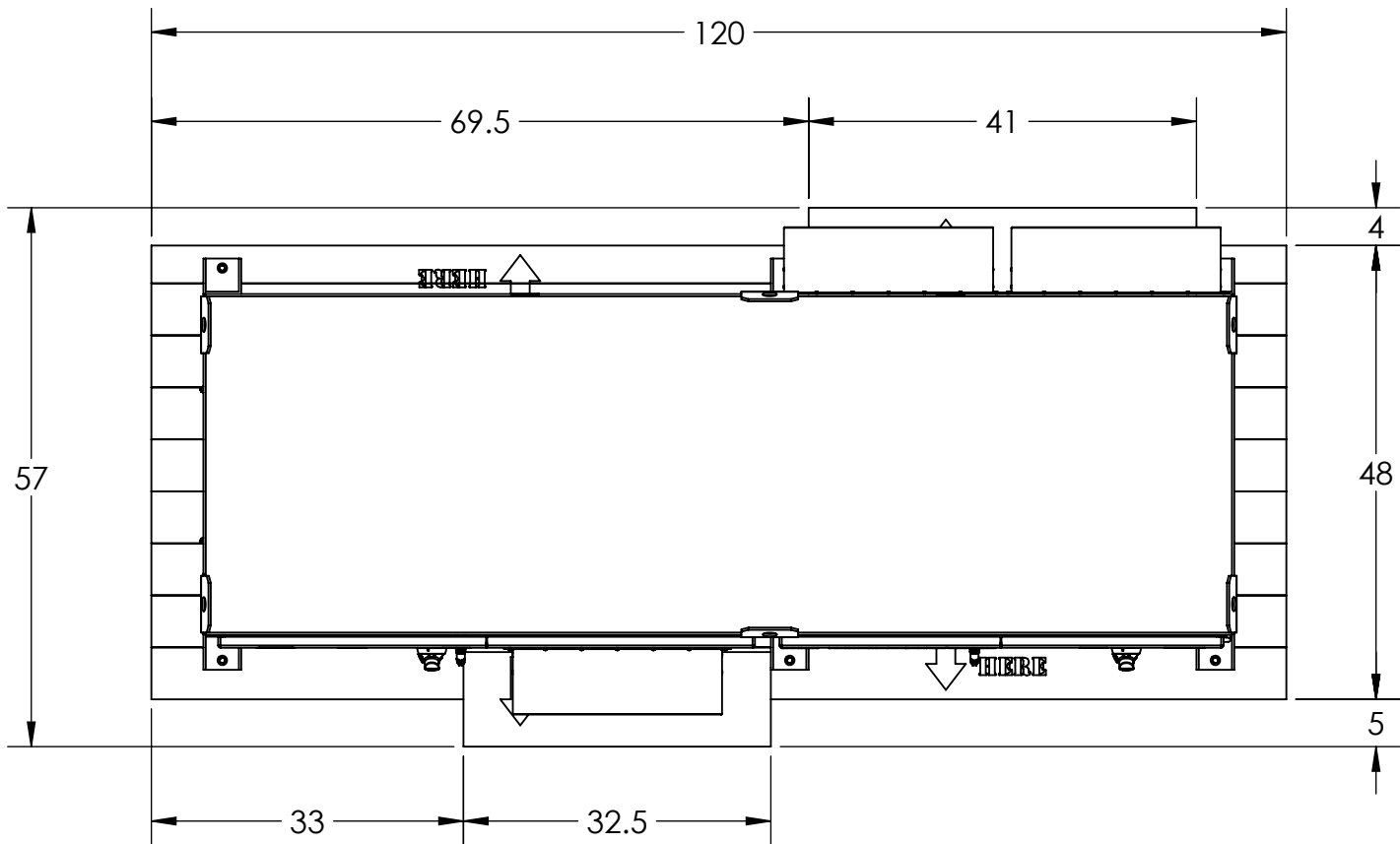
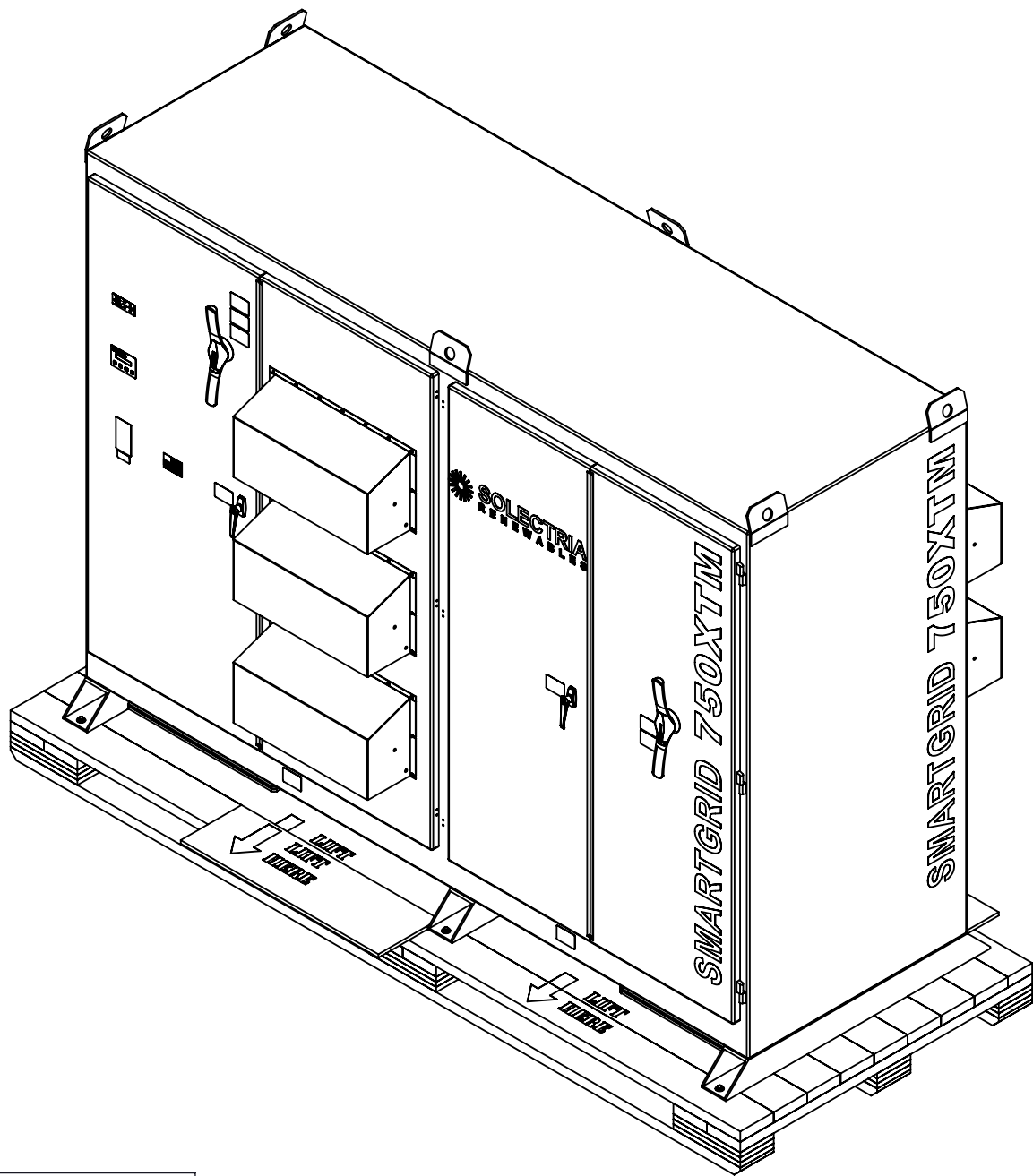
 LOCATION FOR CONDUIT INPUT TO BE USED
FOR OPTIONAL AUXILIARY POWER OUTLET

OPTIONAL AUXILIARY POWER OUTLET
120VAC, RATED FOR 20A

DC CONDUIT FLOOR ENTRY LOCATION

YASKAWA		
SOLECTRIA SOLAR		
PRODUCT: SGI 500/750XTM		
VIEW: SIGNAL WIRE ROUTING LOCATIONS		
DOCUMENT: DOCR-070352		REV: C
SIZE: B	ALL DIMENSIONS ARE IN INCHES	DO NOT SCALE
CUSTOMER INTERFACE DRAWING		
PLEASE NOTE: ALL INFORMATION CONTAINED WITHIN THIS DOCUMENT IS SUBJECT TO CHANGE WITHOUT NOTICE		
SCALE: 1:8	SHEET 14 OF 16	

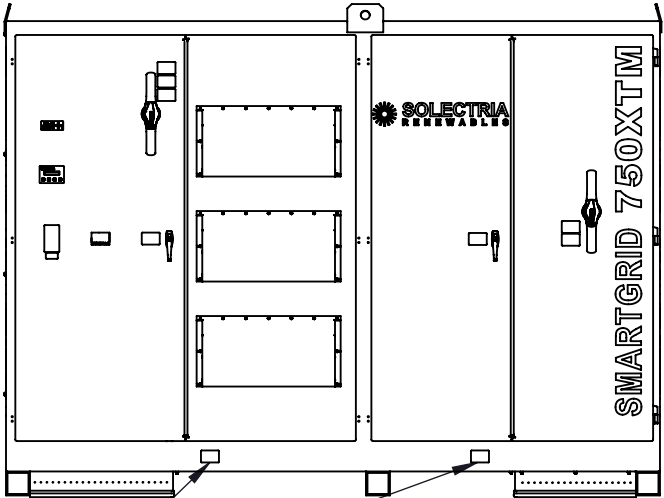
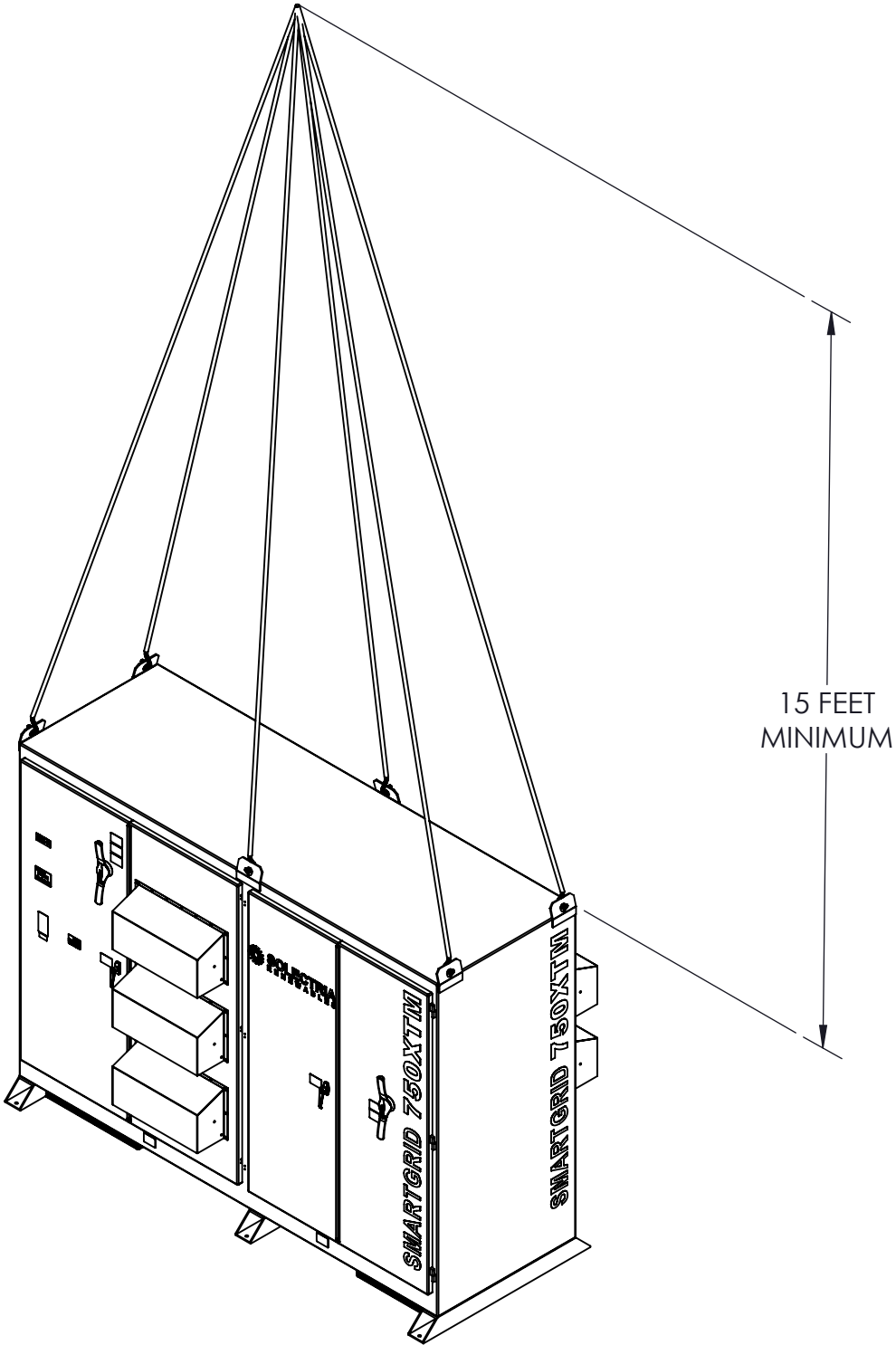
- NOTES:**
- 1. THE INVERTER IS SHIPPED ON AN OVERSIZED SHIPPING PALLET. IT IS RECOMMENDED TO KEEP THE INVERTER SECURED TO THE PALLET AND MOVED AS CLOSE AS POSSIBLE TO THE FINAL LOCATION PRIOR TO REMOVING THE PALLET.



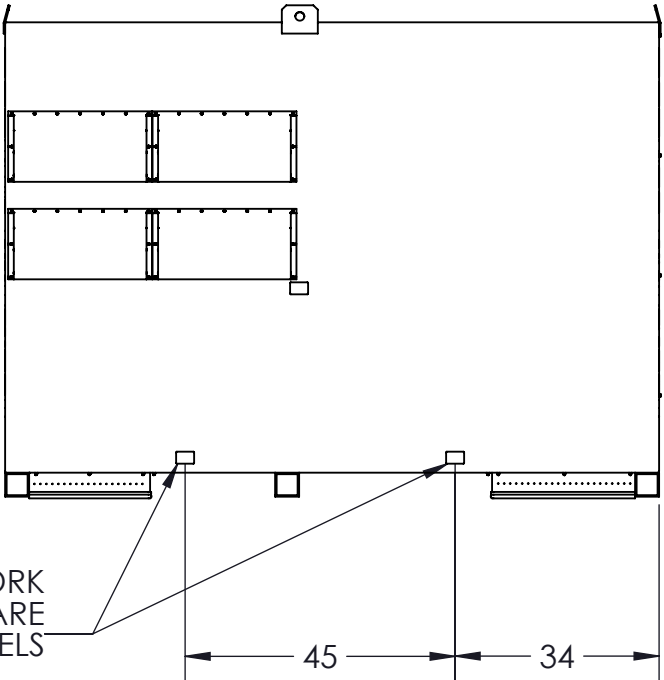
YASKAWA		
SOLECTRIA SOLAR		
PRODUCT: SGI 500/750XTM		
VIEW: AS SHIPPED ISOMETRIC		
DOCUMENT: DOCR-070352		REV: C
SIZE: B	ALL DIMENSIONS ARE IN INCHES	DO NOT SCALE
CUSTOMER INTERFACE DRAWING		
PLEASE NOTE: ALL INFORMATION CONTAINED WITHIN THIS DOCUMENT IS SUBJECT TO CHANGE WITHOUT NOTICE		
SCALE: 1:20	SHEET 15 OF 16	

NOTES:

1. RECOMMENDED SINGLE POINT LIFTING METHOD SHOWN. SEE SOLECTRIA RENEWABLES DOCR-070506 (INSTALLATION AND OPERATION MANUAL, SGI 500XTM-750XTM) FOR PREFERRED LIFTING METHODS AND ADDITIONAL LIFTING AND INSTALLATION REQUIREMENTS.



RECOMMENDED FORK
LIFT LOCATIONS ARE
INDICATED BY LABELS



RECOMMENDED FORK
LIFT LOCATIONS ARE
INDICATED BY LABELS

YASKAWA		
SOLECTRIA SOLAR		
PRODUCT: SGI 500/750XTM		
VIEW: RECOMMENDED RIGGING AND LIFTING METHODS		
DOCUMENT: DOCR-070352		REV: C
SIZE: B	ALL DIMENSIONS ARE IN INCHES	DO NOT SCALE
CUSTOMER INTERFACE DRAWING		
PLEASE NOTE: ALL INFORMATION CONTAINED WITHIN THIS DOCUMENT IS SUBJECT TO CHANGE WITHOUT NOTICE		
SCALE: 1:32	SHEET 16 OF 16	