



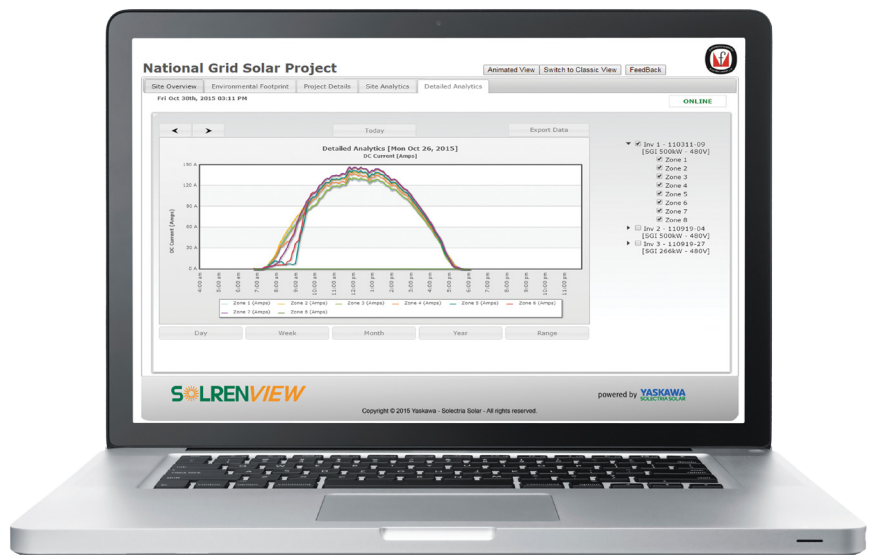
SOLREVIEW™ SOLZONE™

FEATURES

- Monitors individual sub-array currents
- Performance charting
- Real-time status & notifications
- Reliable, safe & secure data storage
- Modbus communications for third-party compatibility

SOLZONE SUB-ARRAY CURRENT MONITORING

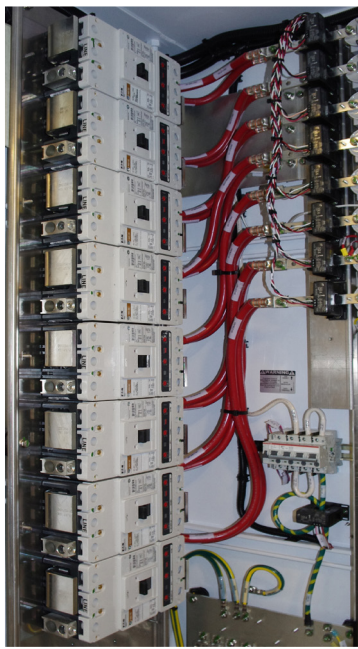
SolrenView web-based monitoring provides customers with the ability to view the total performance of a PV system. SolZone sub-array monitoring, a SolrenView option that requires additional inverter hardware, provides customers an extra level of granularity to view zone-by-zone production performance. SolZone compares individual PV array zone against each other, allowing for early detection of under performing zones or sub-array fuses built into a Yaskawa - Solectria Solar factory installed DC subcombiner. Performance and maintenance alarms are sent to customers via e-mail or text message. SolZone is also compatible with many third-party monitoring services.



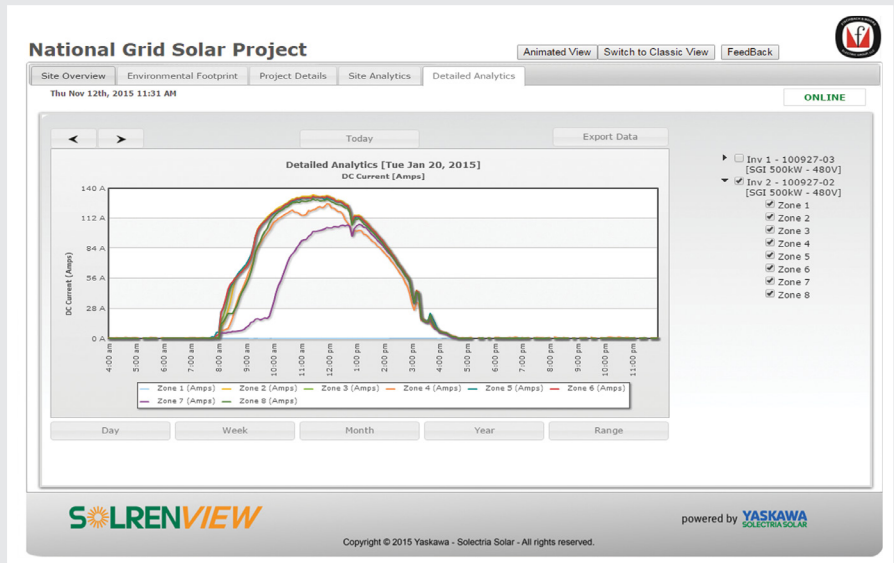
SPECIFICATIONS

Compatible Inverters	PVI 50/60/75/85/100KW, SGI 225/250/266/300/500/500PE, SGI 500XT, SGI 500/750XTM
Accuracy	±3A over full measurement range
Data Range Update	1 minute
Field Retrofit	Currently not available
PVI Series Inverters	Number of Zones
PVI 50-100KW	2, 3, 4, 5, 6, 7, 8
SGI Series Inverters	Number of Zones
SGI 225/250/266/300	6
SGI 500/500PE or SGI 500XT	8
SGI 500/750XTM	16

Please see the product datasheets for more information and specifications (www.solectria.com/support/documentation)



SGI 500 subcombiner (breakers) with SolZone sub-array monitoring. This option comes factory installed.



SolZone detects partial shading so customers may evaluate how to improve their PV array output. The graph above shows partial shading at the beginning of the day.