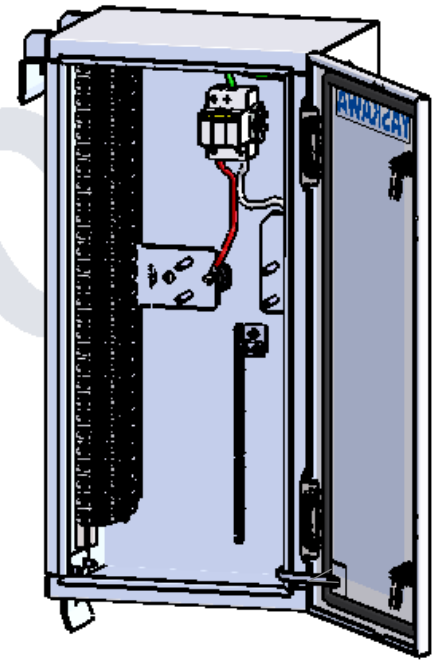
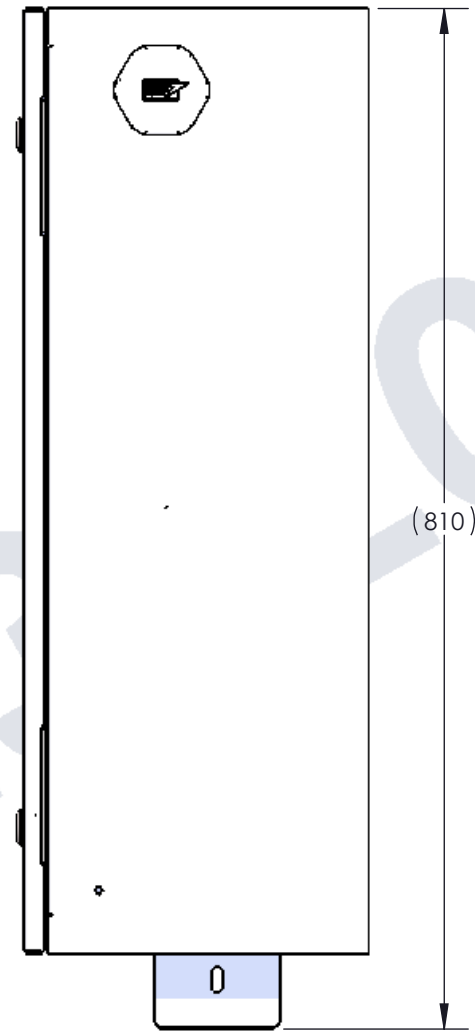
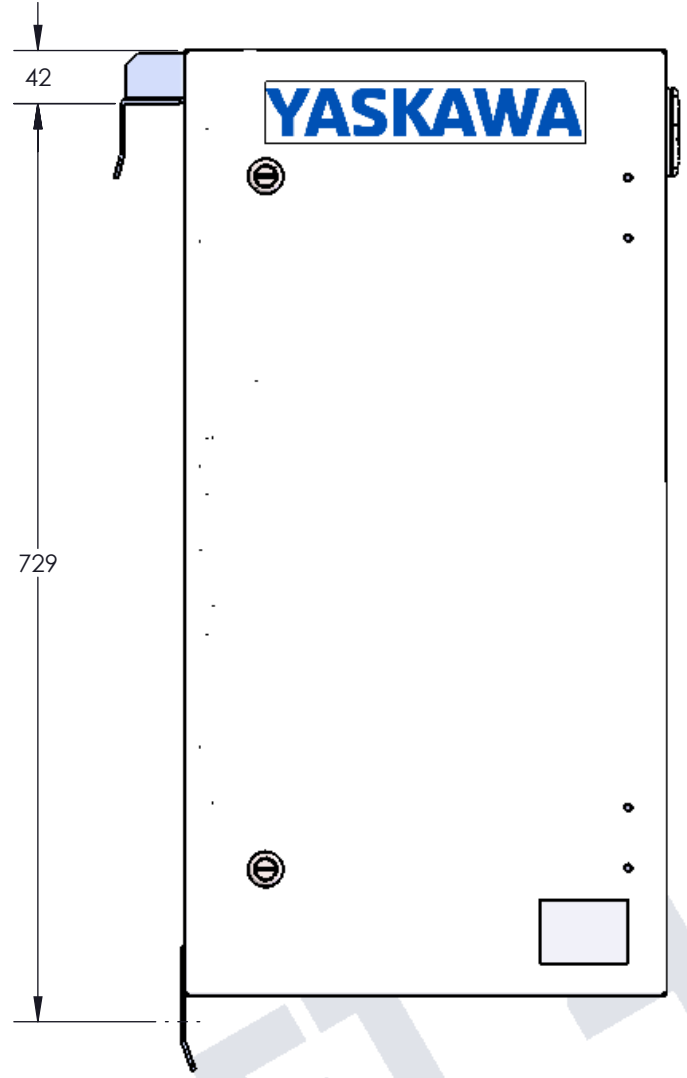
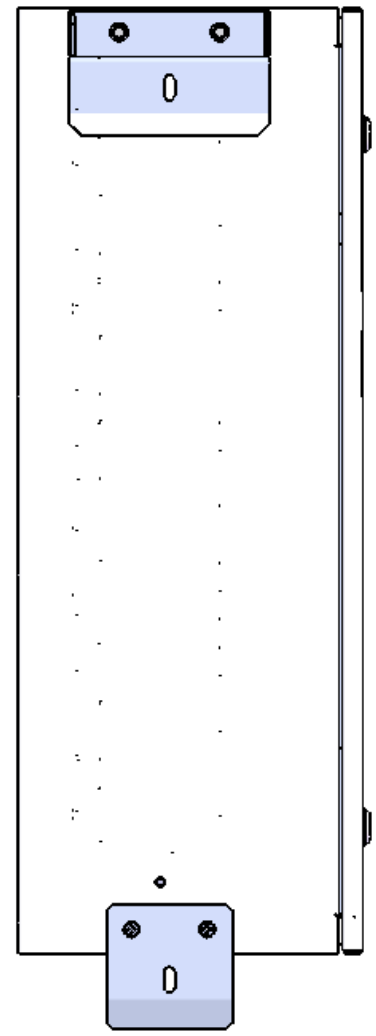
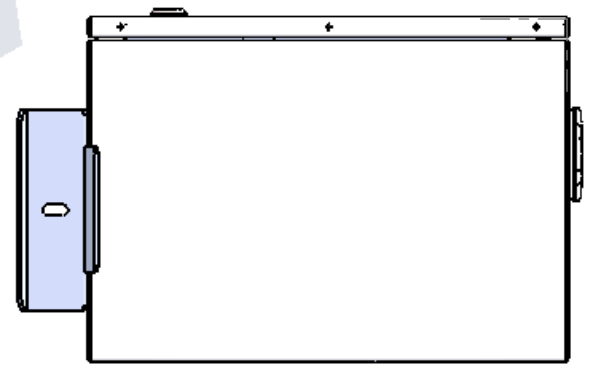


REVISIONS			DRAWN	DATE
REV	EC#	DESCRIPTION	A. MARINELLA	4/23/2020
0	-	INITIAL RELEASE		



SCALE 1:10



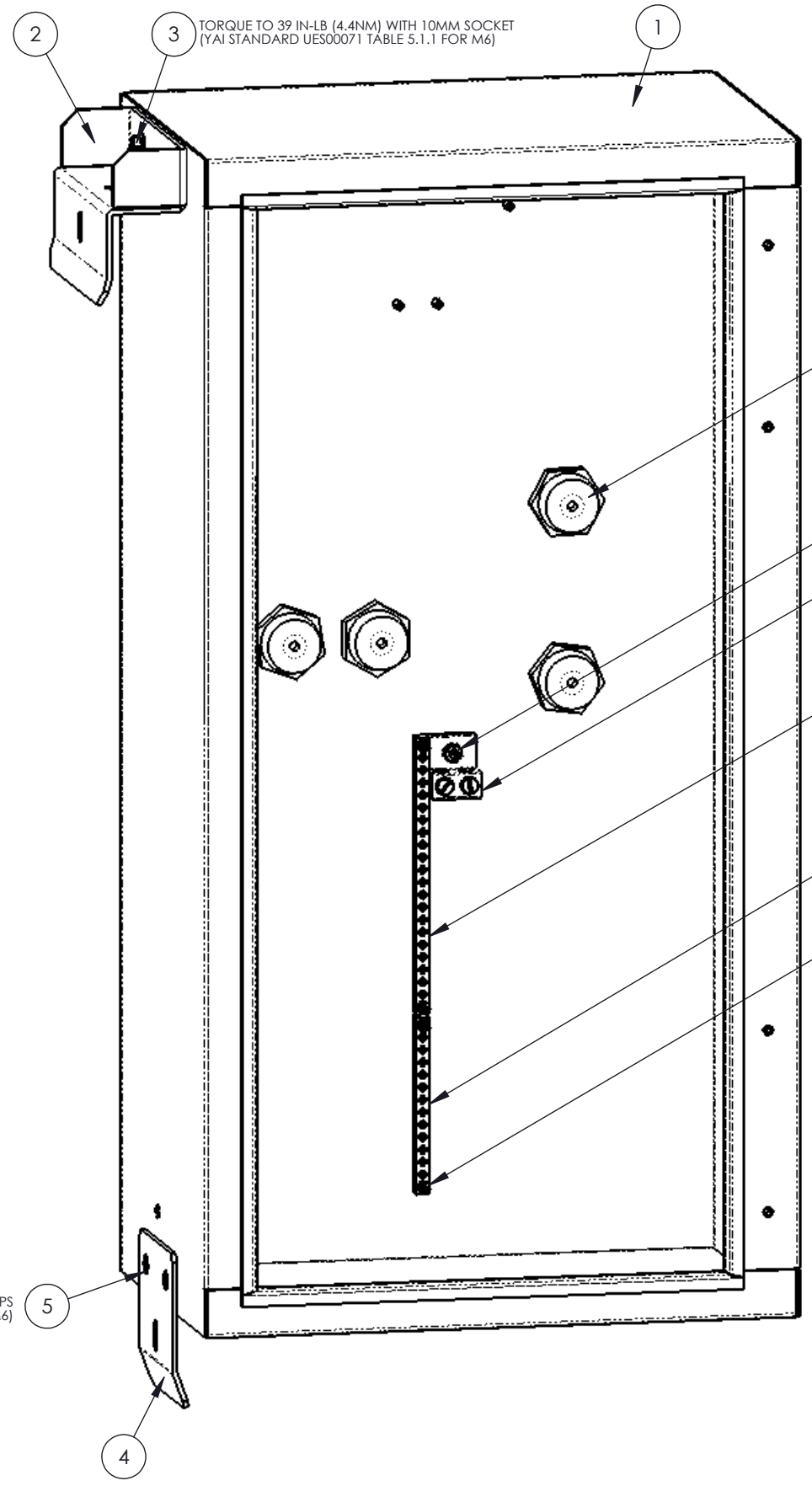
GENERAL TOLERANCES: X ±1 X.X ±0.5 X.XX ±0.1 X.XXX ±0.05 X.XXXX ±0.02 ANGLES ±1.0		BREAK ALL SHARP EDGES AND DEBURR DRAWING PER: ASME Y14.5M-1994 SURFACE FINISH 3.2 3RD ANGLE PROJECTION		DESIGNED A. MARINELLA 9/5/2019 DRAWN A. MARINELLA 9/5/2019 CHECKED C. ROYER 9/5/2019 APPROVED C. ROYER 9/5/2019	MATERIAL NOT APPLICABLE FINISH NOT APPLICABLE MASS 8.5 kg FIRST USED XGI 1500 DIMENSIONS ARE IN MILLIMETERS DO NOT UPDATE MANUALLY DO NOT SCALE	REACH RoHS YASKAWA SOLECTRIA SOLAR COMMERCIAL CONFIDENTIAL ASSEMBLY DRAWING, NEW CA1500 ITEM NUMBER: CA1500-NN-FF DRAWING NUMBER: DOCR-071028 SCALE: 1:6 SHEET 1 OF 5
--	--	---	--	--	---	--

6 5 4 3 2 1

ITEM	PART NUMBER	DESCRIPTION	QTY.
1	MTLSR-070968	ENCLOSURE, HINGED DOOR, CA1500	1
2	USP04741-1	MOUNTING BRACKET, TOP, XGI 1500	1
3	HDW-300343	SCREW, HEX, FLGD, M6x1.0, 12 L, SS	2
4	USP04740-1	MOUNTING BRACKET, BOTTOM, XGI 1500	1
5	USC-1533	SCREW, FLAT, M6x1.0, 10 L, SS	2
6	USC-1574	STO, INS, M6x1.0, F-F, 35 L	4
7	ELC-090049	GROUND BAR, 20 CIRCUIT	1
8	ELC-090048	GROUND BAR, 12 CIRCUIT	1
9	HDW-300179	NUT, HEX, M4x0.7, STL, ZP, 7 WS, SEMS, EXT STAR	4
10	05P00204-0166	TERMINAL BLOCK, NEUTRAL, XGI 1500	1
11	USC-1514	NUT, HEX, M6x1.0, STL, ZP, 10 WS, SEMS, EXT STAR	1

D
C
B
A

D
C
B
A



TORQUE TO 39 IN-LB (4.4NM) WITH 10MM SOCKET
(YAI STANDARD UES00071 TABLE 5.1.1 FOR M6)

TORQUE TO 39 IN-LB (4.4NM) WITH 41MM SOCKET/WRENCH
(YAI STANDARD UES00071 TABLE 5.1.1 FOR M6)

TORQUE TO 39 IN-LB (4.4NM) WITH 10MM SOCKET
(YAI STANDARD UES00071 TABLE 5.1.1 FOR M6)

TORQUE TO 10 IN-LB (1.2NM) WITH 7MM SOCKET
(YAI STANDARD UES00071 TABLE 5.1.1 FOR M4)

TORQUE TO 39 IN-LB (4.4NM) WITH #3 PHILLIPS
(YAI STANDARD UES00071 TABLE 5.1.1 FOR M6)

REACH
RoHS
YASKAWA
SOLECTRIA SOLAR
COMMERCIAL CONFIDENTIAL
ASSEMBLY DRAWING,
NEW CA1500

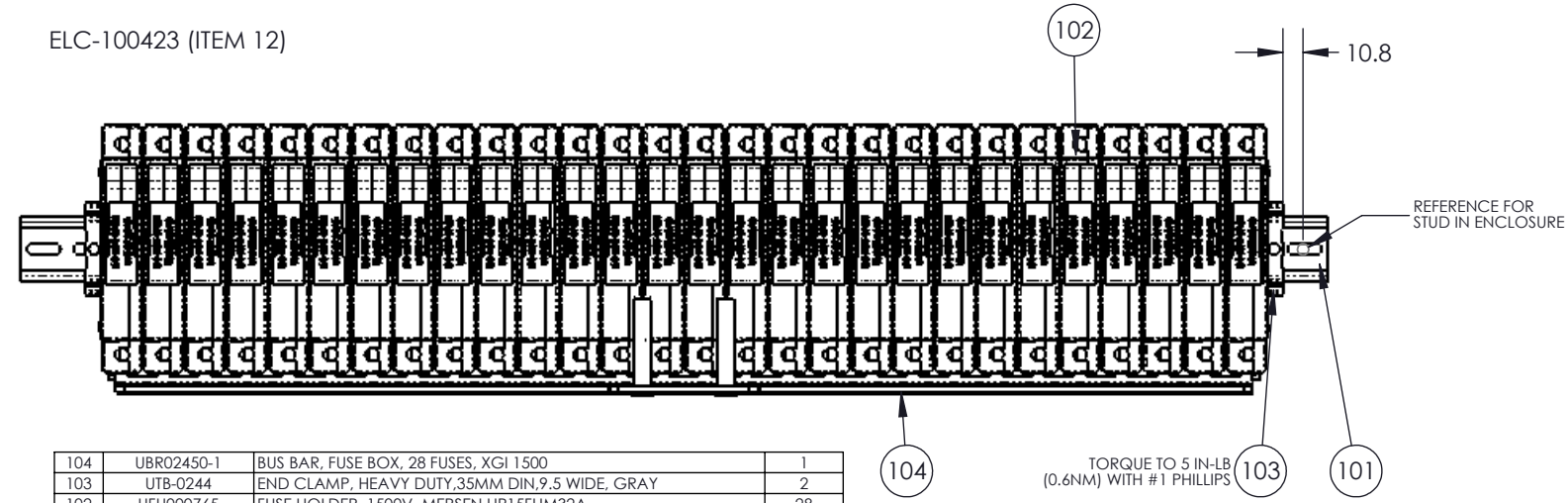
ITEM NUMBER: CA1500-NN-FF	SIZE: B
DRAWING NUMBER: DOCR-071028	REV: 0
SCALE: 1:4	SHEET 2 OF 5

SOLREN YAI SIZE-B, mm 6 5 4 3 2 1

6 5 4 3 2 1

ITEM	PART NUMBER	DESCRIPTION	QTY.
11	USC-1514	NUT, HEX, M6x1.0, STL, ZP, 10 WS, SEMS, EXT STAR	2
12	SEE DETAIL TO LEFT	SUBASSEMBLY, BUS BAR FUSES, COMBINERS, XGI 1500	1
13	USC00075-3	SCREW, PHIL PAN, SEMS, M6x1.0, 12 L, STL, ZP, LW + FW	2
14	UBM-0025	DIN RAIL, 15MM DEEP, SPD, COMBINERS, XGI 1500	75MM
15	HDW-300176	NUT, HEX, M5x0.8, STL, ZP, 8 WS, SEMS, EXT STAR	2
16	ELC-100317	VENT, GORE, M32 X 1.5, GREY	1
17	ELC-100318	NUT, GORE VENT, M32 X 1.5, GREY	1

ELC-100423 (ITEM 12)



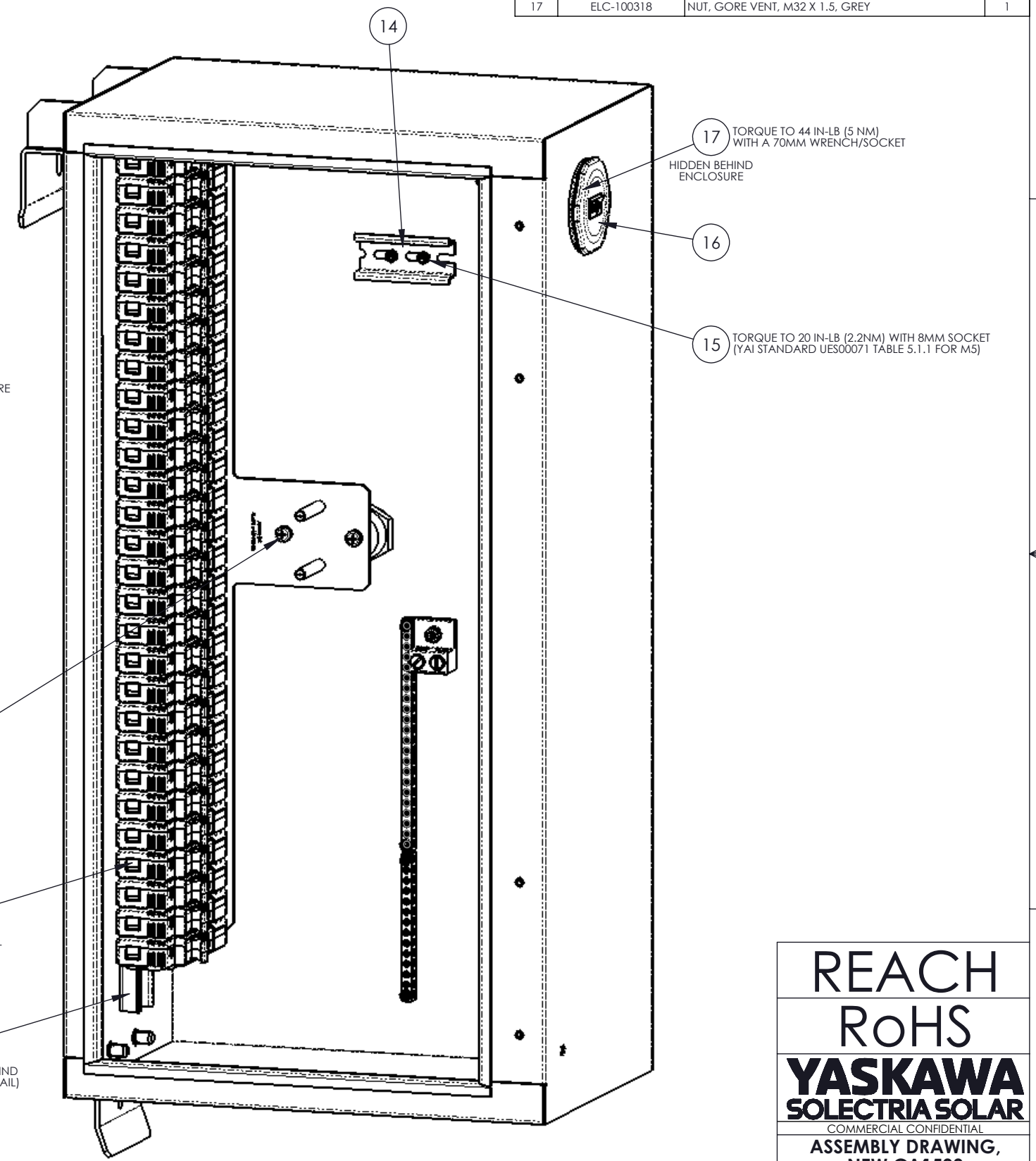
ITEM	SOLREN P/N	DESCRIPTION	QTY
104	UBR02450-1	BUS BAR, FUSE BOX, 28 FUSES, XGI 1500	1
103	UTB-0244	END CLAMP, HEAVY DUTY, 35MM DIN, 9.5 WIDE, GRAY	2
102	UFU000765	FUSE HOLDER, 1500V, MERSEN HP15FHM32A	28
101	UBM-0025	DIN RAIL, 15MM DEEP, FUSE HOLDERS, COMBINERS, XGI 1500	700MM
ITEM	SOLREN P/N	DESCRIPTION	QTY

BILL OF MATERIAL

TORQUE TO 5 IN-LB (0.6NM) WITH #1 PHILLIPS

TORQUE TO 39 IN-LB (4.4NM) WITH #3 PHILLIPS (YAI STANDARD UES00071 TABLE 5.1.1 FOR M6)

TORQUE TO 39 IN-LB (4.4NM) WITH 10MM SOCKET (YAI STANDARD UES00071 TABLE 5.1.1 FOR M6)



REACH
RoHS
YASKAWA
SOLECTRIA SOLAR
COMMERCIAL CONFIDENTIAL
ASSEMBLY DRAWING,
NEW CA1500

ITEM NUMBER: CA1500-NN-FF	SIZE: B
DRAWING NUMBER: DCR-071028	REV: 0
SCALE: 1:4	SHEET 3 OF 5

D
C
B
A

D
C
B
A

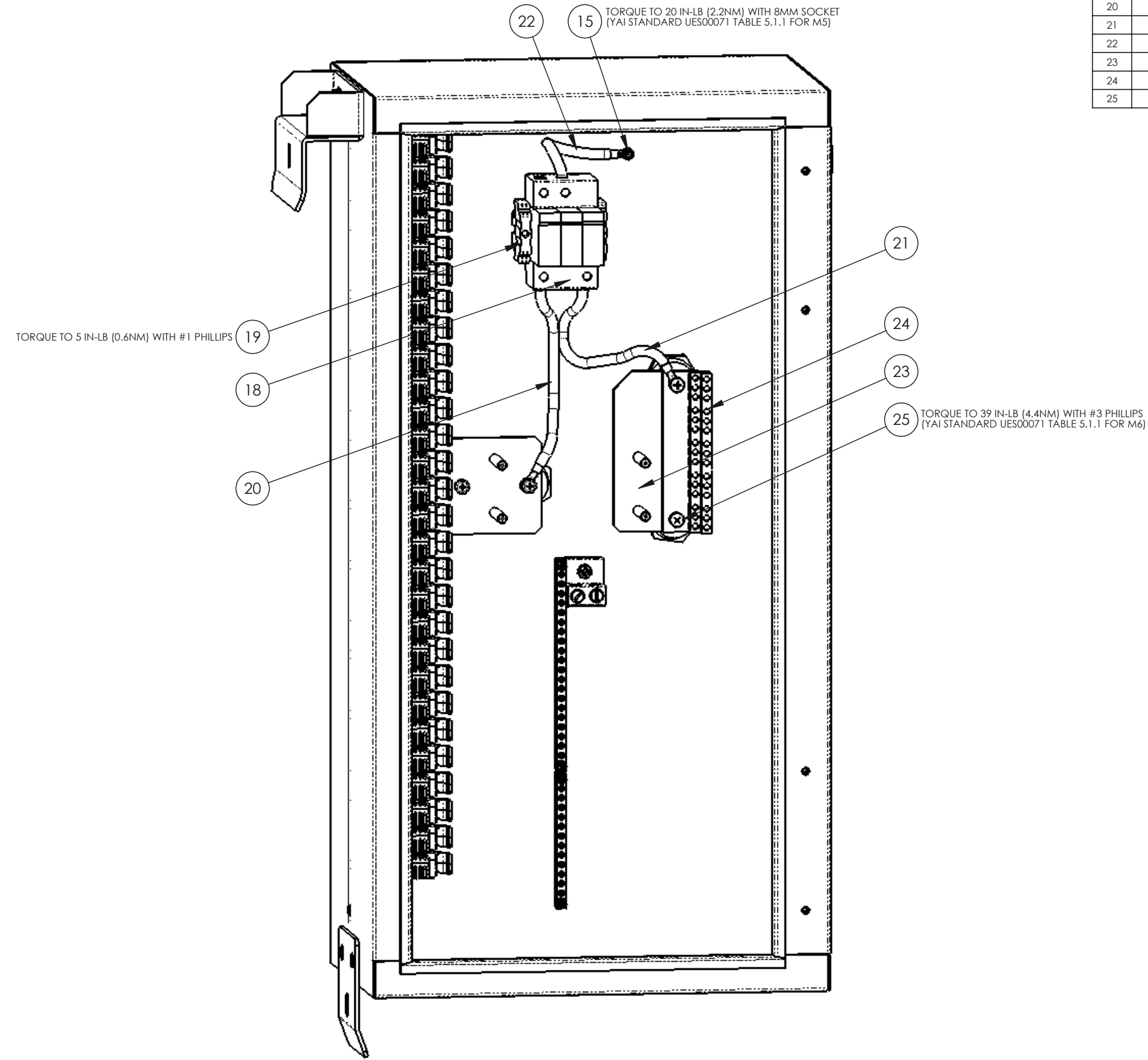
SOLREN YAI SIZE-B, mm 6 5 4 3 2 1

6 5 4 3 2 1

ITEM	SOLREN P/N	DESCRIPTION	QTY.
15	HDW-300176	NUT, HEX, M5x0.8, STL, ZP, 8 WS, SEMS, EXT STAR	1
18	ELC-100365	SURGE PROTECTION DEVICE, 1500VDC, CITEL	1
19	UTB-0244	END CLAMP, HEAVY DUTY, 35MM DIN, 9.5 WIDE, GRAY	2
20	UWR01457-1	CABLE, SPD, DC POS, COMBINERS, XGI 1500	1
21	UWR01458-1	CABLE, SPD, DC NEG, COMBINERS, XGI 1500	1
22	UWR01459-1	CABLE, SPD, GND, DISCOM, XGI 1500	1
23	MTLSR-070970	BUS BAR, NEG, OUTPUT, NEW CA1500	1
24	1030	TERMINAL ASSEMBLY, 30 POSITIONS	1
25	USC00067-11	SCREW, PHIL PAN, SEMS, M6x1.0, 20 L, STL, ZP, LW + FW	2

D
C
B
A

D
C
B
A

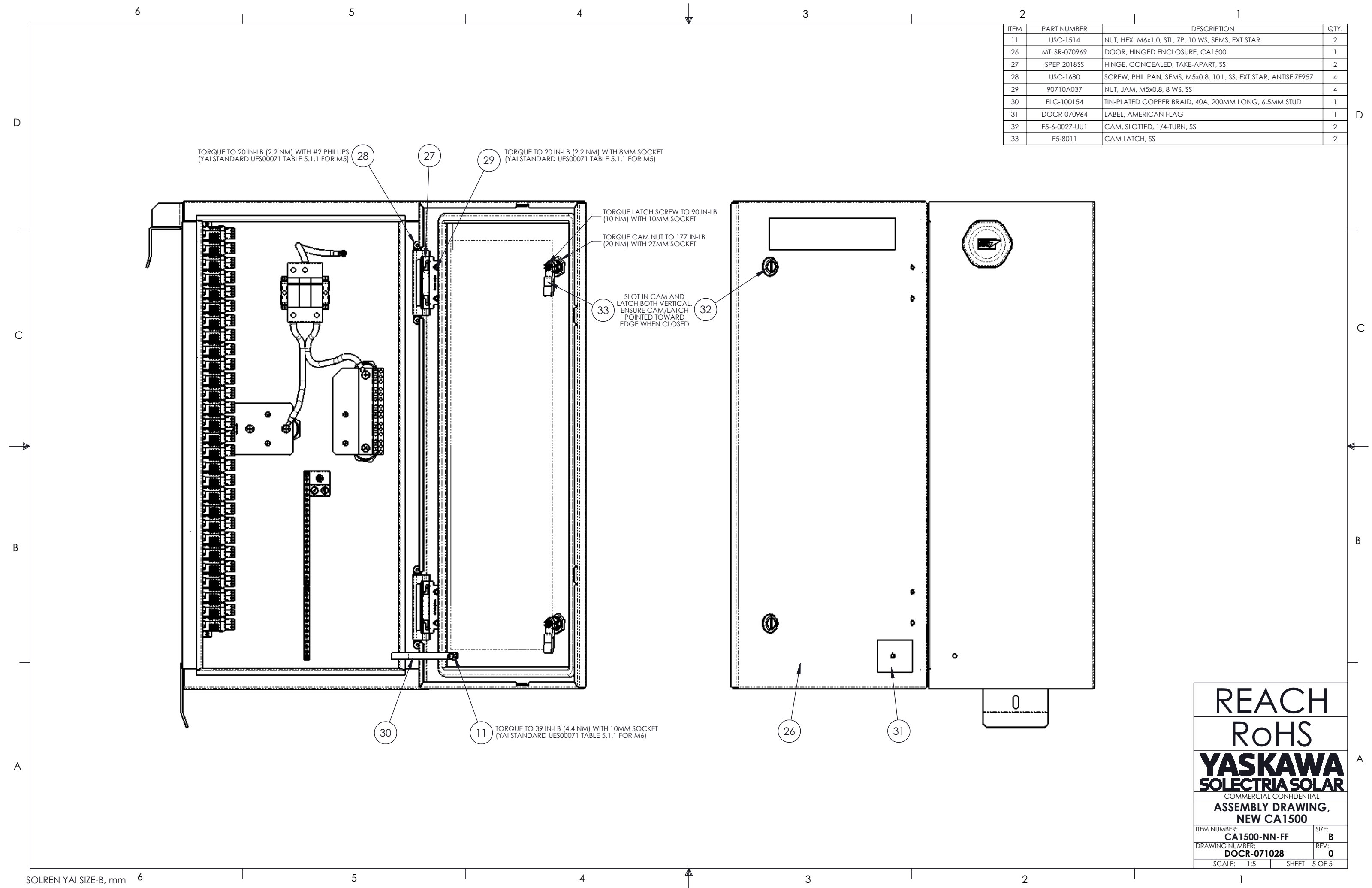


SOLREN YAI SIZE-B, mm 6 5 4 3 2 1

REACH
RoHS
YASKAWA
SOLECTRIA SOLAR
COMMERCIAL CONFIDENTIAL

**ASSEMBLY DRAWING,
NEW CA1500**

ITEM NUMBER: CA1500-NN-FF	SIZE: B
DRAWING NUMBER: DOCR-071028	REV: 0
SCALE: 1:4	SHEET 4 OF 5



ITEM	PART NUMBER	DESCRIPTION	QTY.
11	USC-1514	NUT, HEX, M6x1.0, STL, ZP, 10 WS, SEMS, EXT STAR	2
26	MTLSR-070969	DOOR, HINGED ENCLOSURE, CA1500	1
27	SPEP 2018SS	HINGE, CONCEALED, TAKE-APART, SS	2
28	USC-1680	SCREW, PHIL PAN, SEMS, M5x0.8, 10 L, SS, EXT STAR, ANTISEIZE957	4
29	90710A037	NUT, JAM, M5x0.8, 8 WS, SS	4
30	ELC-100154	TIN-PLATED COPPER BRAID, 40A, 200MM LONG, 6.5MM STUD	1
31	DOCR-070964	LABEL, AMERICAN FLAG	1
32	E5-6-0027-UU1	CAM, SLOTTED, 1/4-TURN, SS	2
33	E5-8011	CAM LATCH, SS	2

REACH
RoHS
YASKAWA
SOLECTRIA SOLAR
COMMERCIAL CONFIDENTIAL

**ASSEMBLY DRAWING,
NEW CA1500**

ITEM NUMBER: CA1500-NN-FF	SIZE: B
DRAWING NUMBER: DOCR-071028	REV: 0

SCALE: 1:5 SHEET 5 OF 5