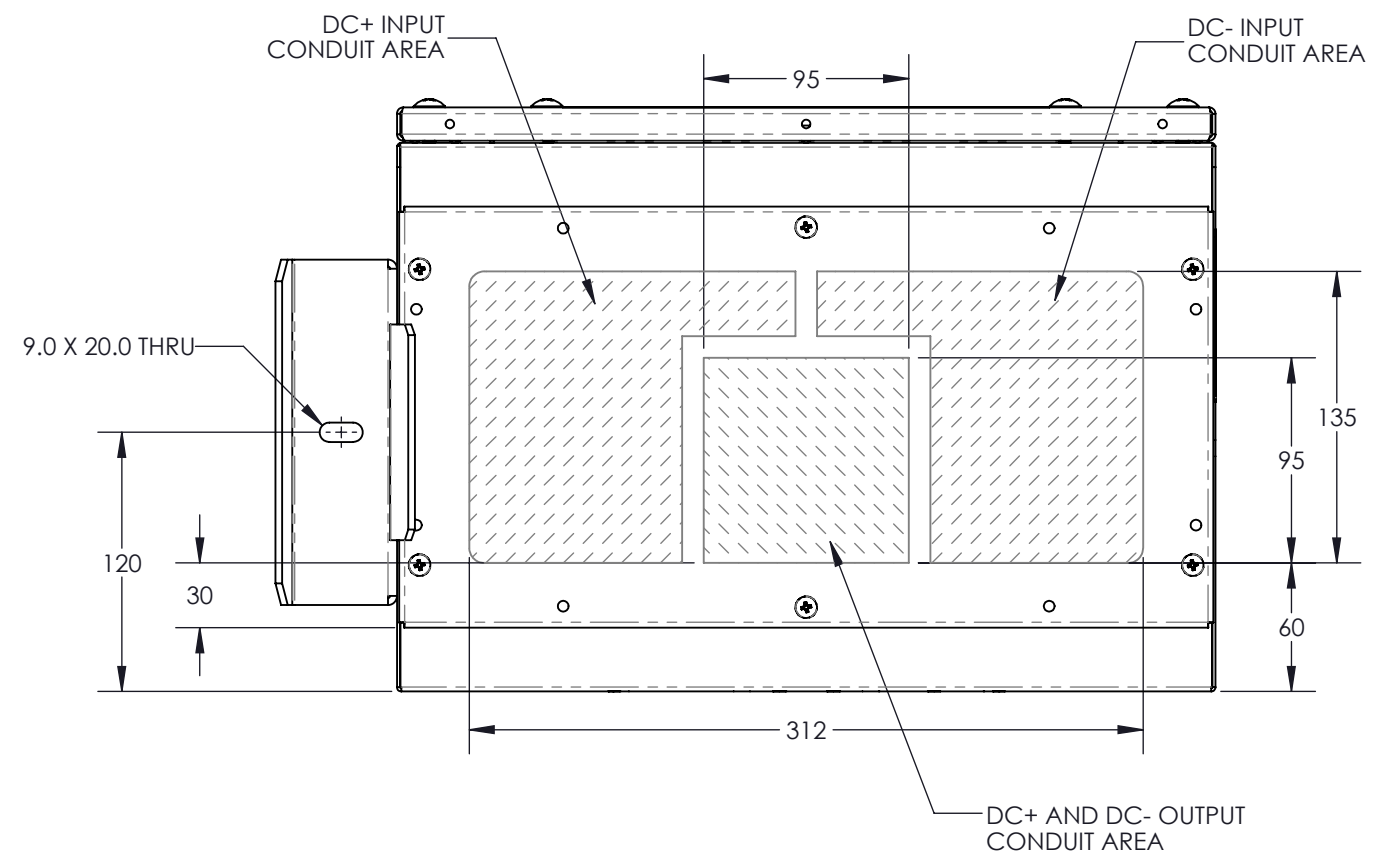
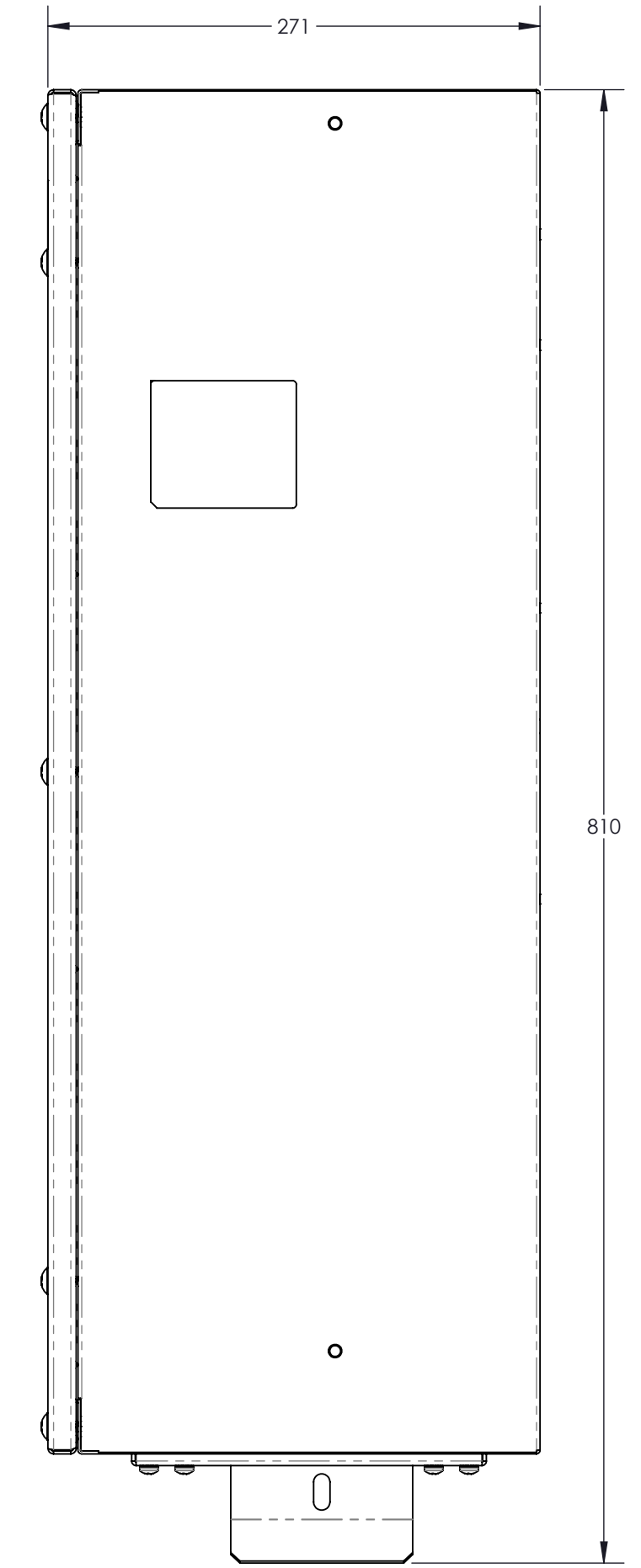
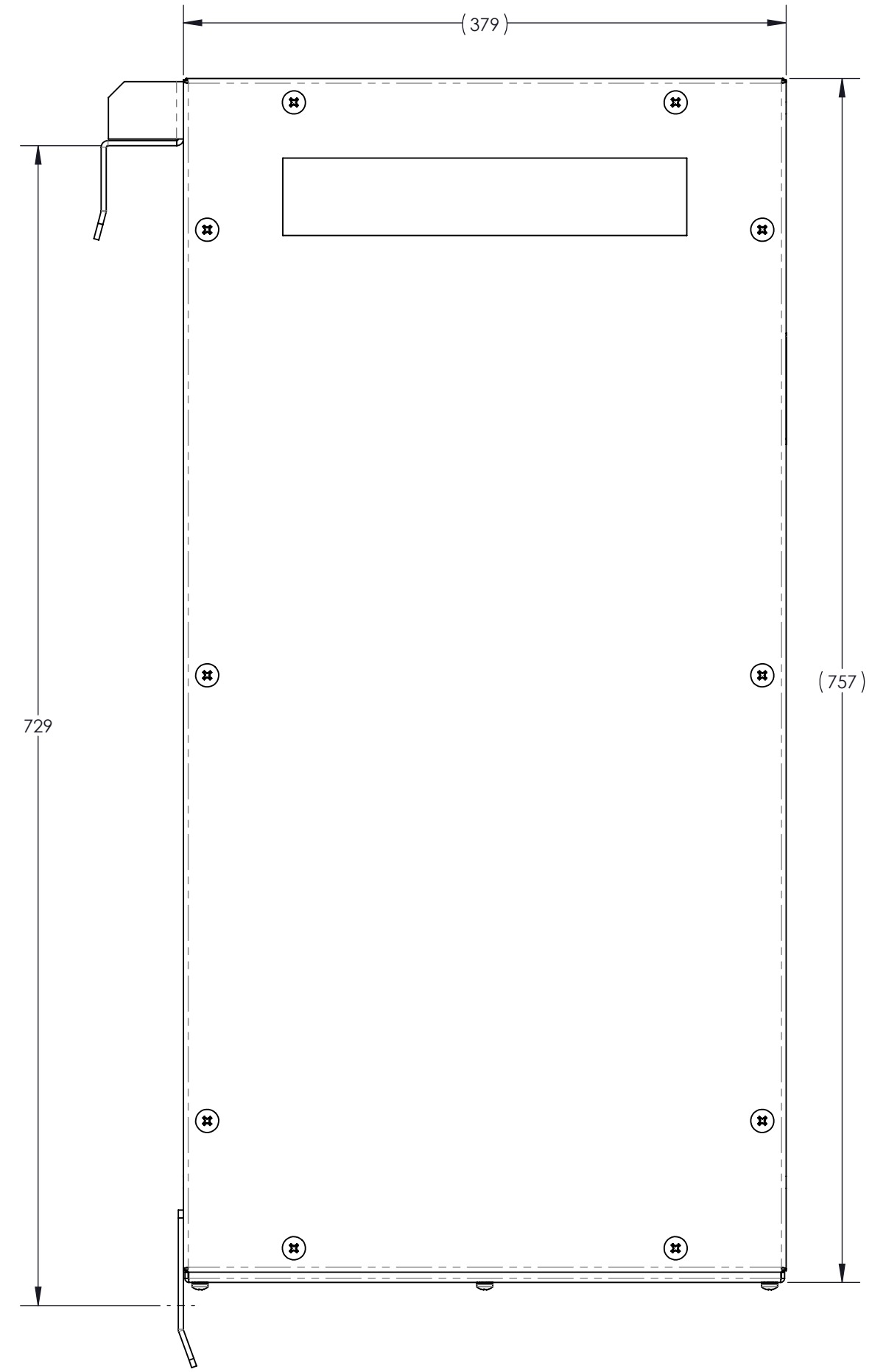
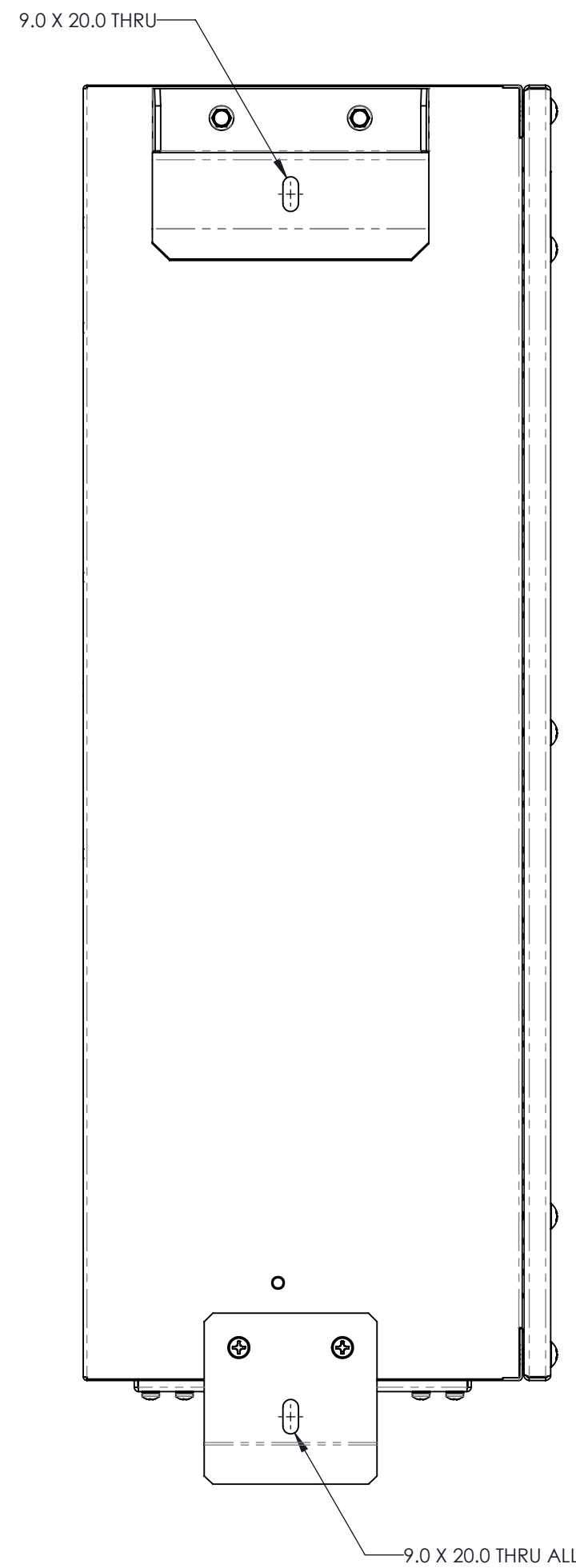


| REV | | EC# | DESCRIPTION | REVISIONS | | DRAWN | DATE |
|-----|---|-----|-----------------|--------------|--|--------------|-----------|
| 0 | - | - | INITIAL RELEASE | A. MARINELLA | | A. MARINELLA | 12/1/2020 |



- NOTES:
- SEE INSTALLATION AND OPERATION MANUAL FOR XGI 1500 ATTACHED COMBINER FOR FURTHER INSTALLATION REQUIREMENTS.
 - THE 28-POSITION MODEL IS SHOWN IN ALL IMAGES. OTHER AVAILABLE FUSE POSITION QUANTITIES ARE 16, 20, 24, AND 26.

REACH
RoHS

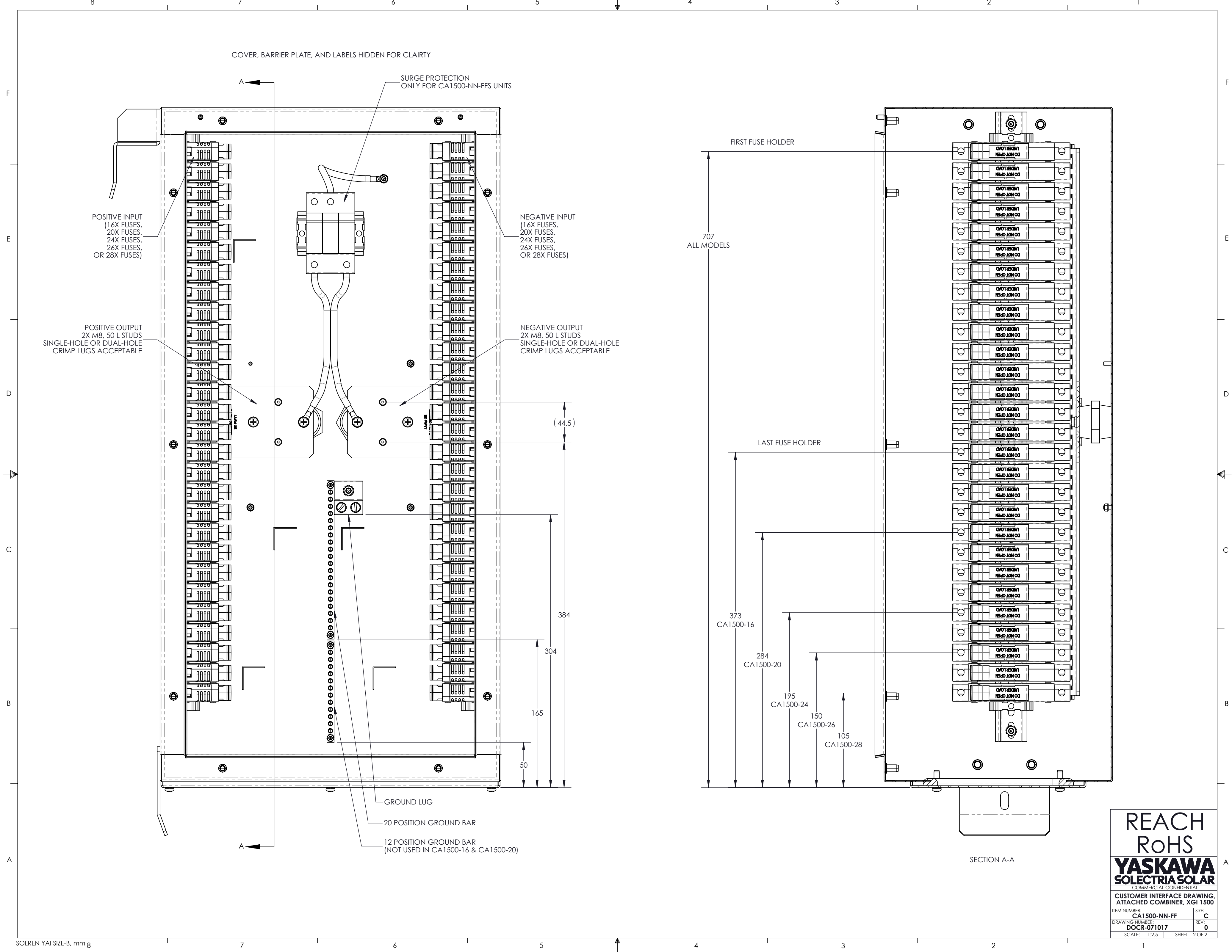
YASKAWA
SOLECTRIA SOLAR

COMMERCIAL CONFIDENTIAL

CUSTOMER INTERFACE DRAWING:
ATTACHED COMBINER, XGI 1500

ITEM NUMBER: CA1500-NN-FF
DRAWING NUMBER: DOCR-071017
SCALE: 1:3.5 SHEET 1 OF 2

| | | |
|-------------------------------|------------------------|--------------|
| DESIGNED | A. MARINELLA | 11/24/2020 |
| DRAWN | A. MARINELLA | 11/24/2020 |
| CHECKED | C. ROYER | 11/24/2020 |
| APPROVED | C. ROYER | 11/24/2020 |
| MATERIAL | NOT APPLICABLE | |
| FINISH | NOT APPLICABLE | |
| MASS | 7.6 kg | |
| FIRST USED | XGI 1500 | |
| DIMENSIONS ARE IN MILLIMETERS | DO NOT UPDATE MANUALLY | DO NOT SCALE |



COVER, BARRIER PLATE, AND LABELS HIDDEN FOR CLAIRTY

SURGE PROTECTION ONLY FOR CA1500-NN-FFS UNITS

POSITIVE INPUT
(16X FUSES,
20X FUSES,
24X FUSES,
26X FUSES,
OR 28X FUSES)

NEGATIVE INPUT
(16X FUSES,
20X FUSES,
24X FUSES,
26X FUSES,
OR 28X FUSES)

POSITIVE OUTPUT
2X M8, 50 L STUDS
SINGLE-HOLE OR DUAL-HOLE
CRIMP LUGS ACCEPTABLE

NEGATIVE OUTPUT
2X M8, 50 L STUDS
SINGLE-HOLE OR DUAL-HOLE
CRIMP LUGS ACCEPTABLE

GROUND LUG

20 POSITION GROUND BAR

12 POSITION GROUND BAR
(NOT USED IN CA1500-16 & CA1500-20)

FIRST FUSE HOLDER

707
ALL MODELS

LAST FUSE HOLDER

373
CA1500-16

284
CA1500-20

195
CA1500-24

150
CA1500-26

105
CA1500-28

(44.5)

384

304

165

50

SECTION A-A

REACH
RoHS
YASKAWA
SOLECTRIA SOLAR

COMMERCIAL CONFIDENTIAL
CUSTOMER INTERFACE DRAWING
ATTACHED COMBINER, XGI 1500

| | | | |
|-----------------|--------------|--------|--------|
| ITEM NUMBER: | CA1500-NN-FF | SIZE: | C |
| DRAWING NUMBER: | DOCR-071017 | REV: | 0 |
| SCALE: | 1:2.5 | SHEET: | 2 OF 2 |